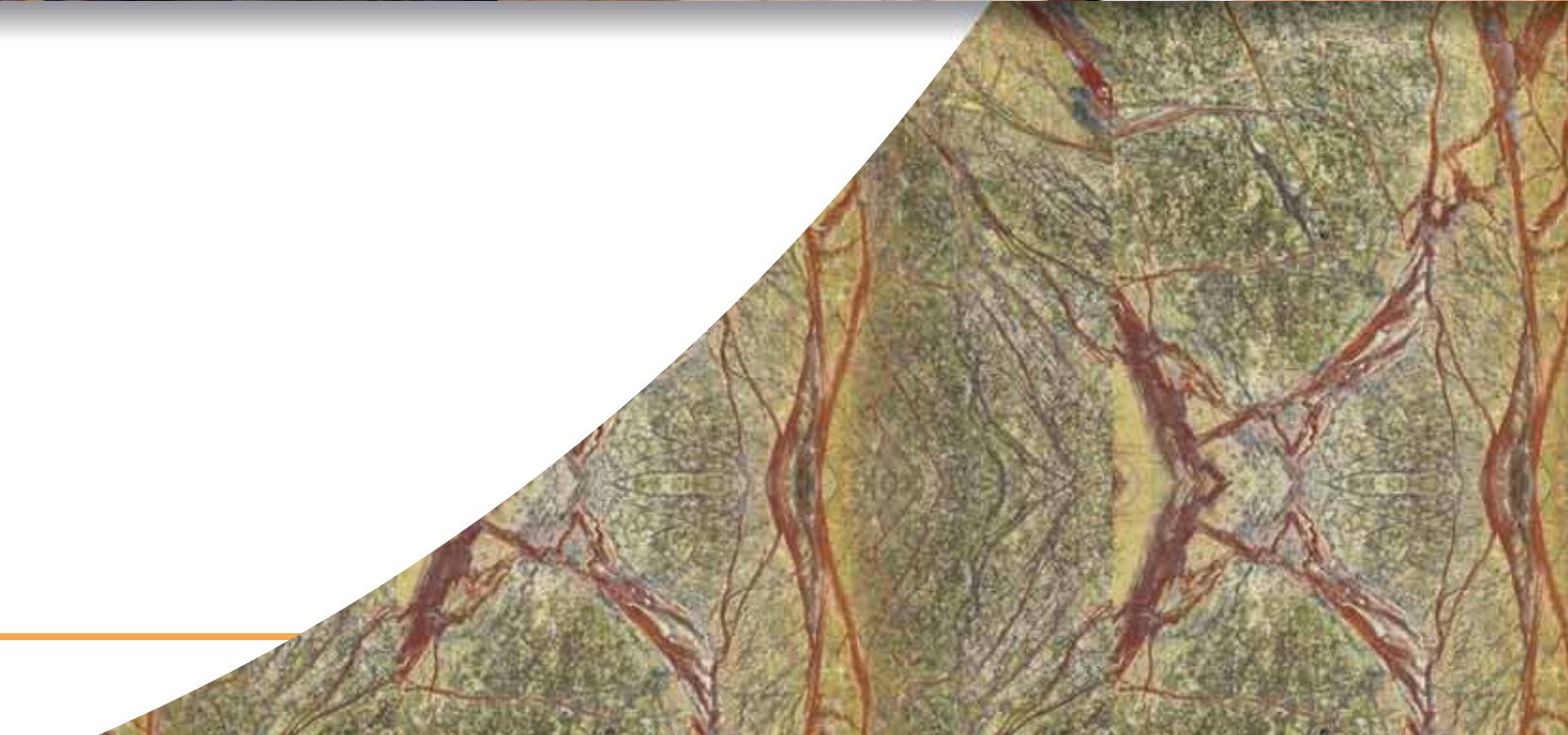




**SRB GROUP**

# GRANITE & MARBLE



# STRENGTHING

## Our Roots in Integration & Innovation

A part of the SRB Group, SRB International Pvt. Ltd is India's largest Exporter of Natural stones. SRB International Pvt. Ltd. is recognised in Russia & CIS countries for Granite, Marbles & Indian Sandstones.

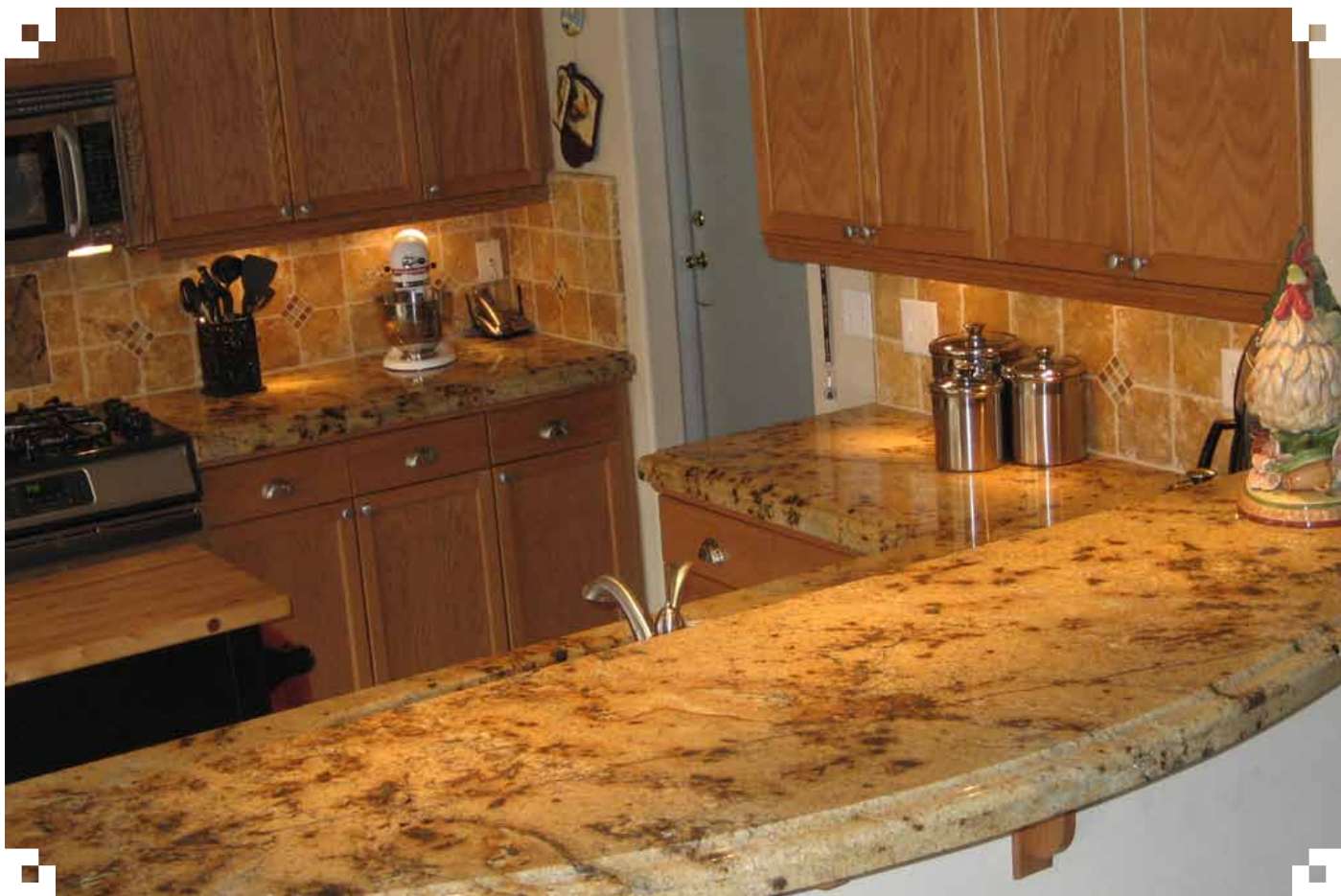
SRB International Pvt. Ltd. is sourcing the granite and Marbles from the natural mines situated in northern and southern India. SRB International Pvt. Ltd. has an edge over the other suppliers/traders because of direct contact with the mine owners.

The Granite, Marbles and Indian Sandstones is an important structural and ornamental stone, and due to its high compressive strength and durability it is used for massive structural work. Granite/Marbles blocks are quite literally, as old as the earth - Perfect for use in residential and commercial flooring applications.

We offer wide range of granite rough blocks to the customer's satisfaction. We have always strived to provide the finest of quality Granite Rough Blocks to our customers.

1. **Granite/Marbles (Polished Slabs & Tiles)**
2. **Granite/Marbles (Block range 5 to 27 tonnes)**
3. **Indian Sandstone**
4. **Monuments**





**GRANITE** is an important structural and decorative stone. It's used for immense structural work due to its high compressive strength and durability. It is the hardest structural stone. Granite's rich colors, stiffness and density, make it an ideal choice for flooring, counter tops, vanities as well as exterior applications. Many stylish patterns and colors make granite the most versatile and trendy of all stones. It is also a very low-maintenance stone. Granite is composed of quartz, feldspars, micas and other minerals. These minerals contribute to the color and texture of the granite stones. Granites get their wonderful variety of colors and patterns from minerals that are melted into the liquid mass as it is formed.

**MARBLE** has been valued for thousands of years for its rich palette of beautiful colors and appearance and is perfect, pretty much anywhere in the house. Marble stones consist of limestone that has undergone heat and pressure. A transformation process takes place when the weight of overlying material, pressure from crystal collisions and heat from the earth's core generate temperatures in excess of 1800°F. Texture of marble depends on the form, size and uniformity of grains. The element components of marble determine the color of the stone. Generally calcite and dolomite marbles are of pure white color. Variations of whiteness of pure marbles are due to the mixture of foreign substances. Such impurities form streaks and clouds.

**SANDSTONE** are well known all over the world for its paramount quality and color. Sandstone is an excellent building stone. Sandstone slabs and sandstone tiles are typically used as flooring or paving material. We are processing and exporting rainbow sandstone, teakwood sandstone, Agra red sandstone, Dholpur pink sandstone, Dholpur beige sandstone, raj green sandstone, mint sandstone, Modak sandstone in tiles and slabs.

**MONUMENTS** are well accepted in the market for its sheer beauty, durability and precision. We have established ourselves as a leading monument exporter to reputed Russia and CIS Companies and are constantly developing new markets. We specialize in Monuments, Sculpture, Landscaping stone works, Memorials and other customized Projects.

# GRANITE





ABSOLUTE BLACK



ALMOND PEARL



APPLE GREEN



BALA FLOWER



BALTIC BROWN



BLACK PEARL



BLUE ICE



BURANO RED



CHIMA PINK



CLASSIC RED



COFFEE BROWN



CRYSTAL YELLOW



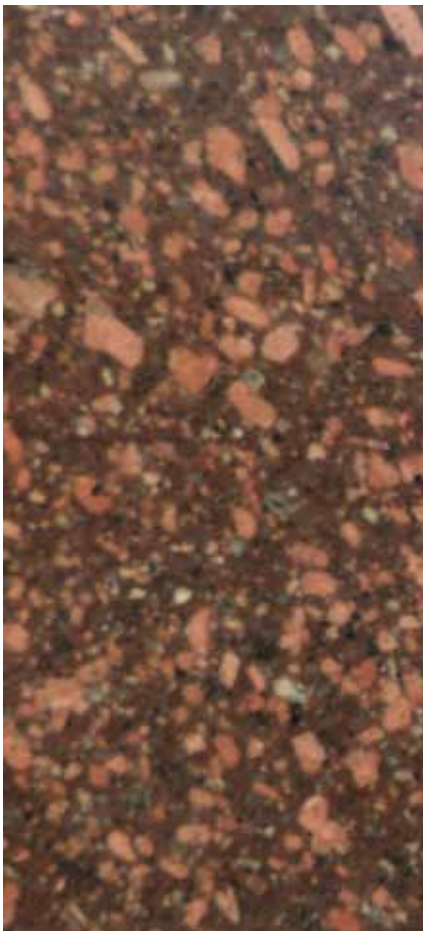
DESERT BROWN



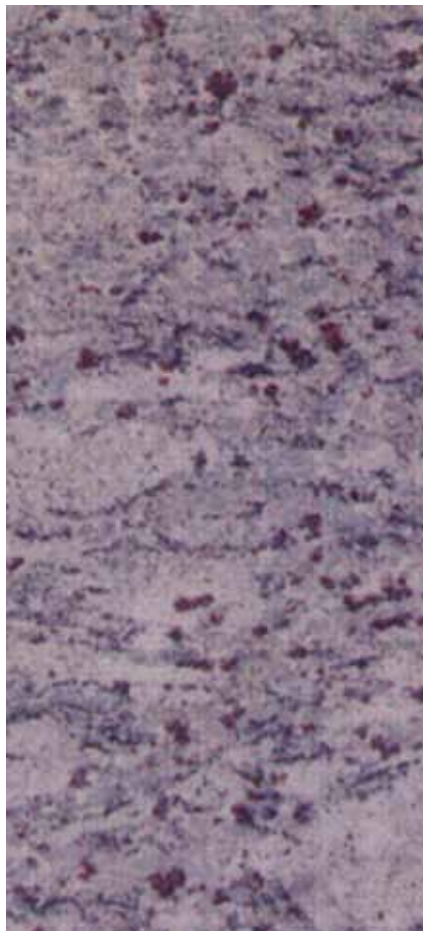
IMPERIAL PINK



INDIAN JUPARANA



LAVARIA



LAVENDER BLUE



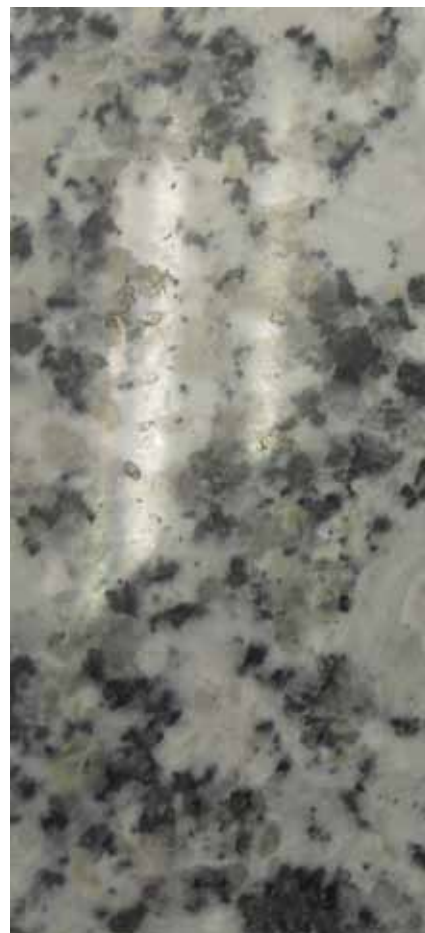
NATURAL WHITE



NEW IMPERIAL RED



PARADISO



PEARL WHITE



RIVER WHITE

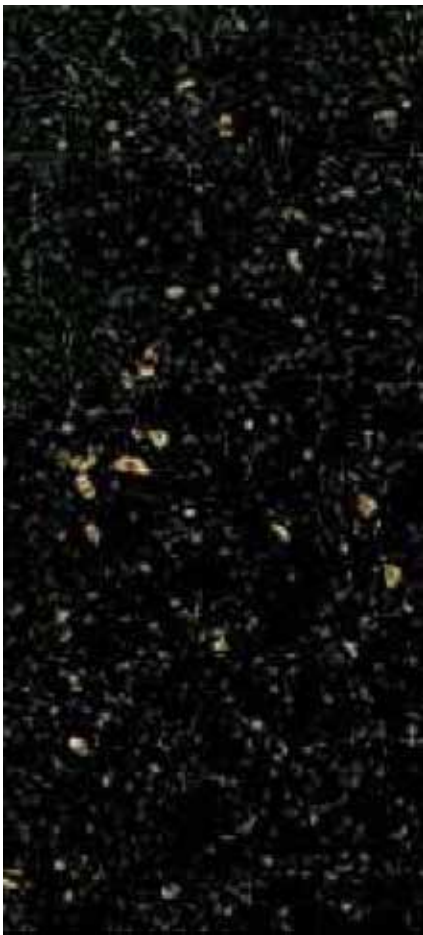


ROSY PINK



SOAP STONE GOLD





STAR GALAXY



TAN BROWN



TIGER SKIN



TROPICANA BLUE



VISCONT WHITE



Z BROWN

# MARBLE





GREEN-MARBLE



ITA GOLD



LADY ONXY



LAKE BLACK



MAHARANI PINK



OPEL WHITE



PERLATO QUEEN MARBLE



PURPLE WHITE



RAINFOREST BROWN



RAINFOREST GOLD



RAINFOREST GREEN

# SANDSTONE





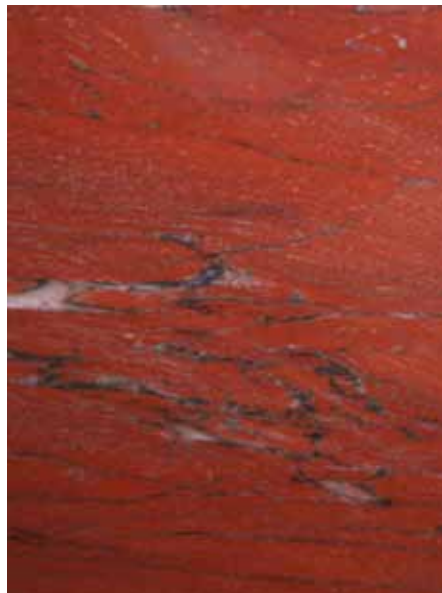
DESERT SANDSTONE



FOSSIL



QUARTZITE GREY



QUARTZITE RED



QUARTZITE BROWN



RAINBOW SANDSTONE



TEAKWOOD SANDSTONE

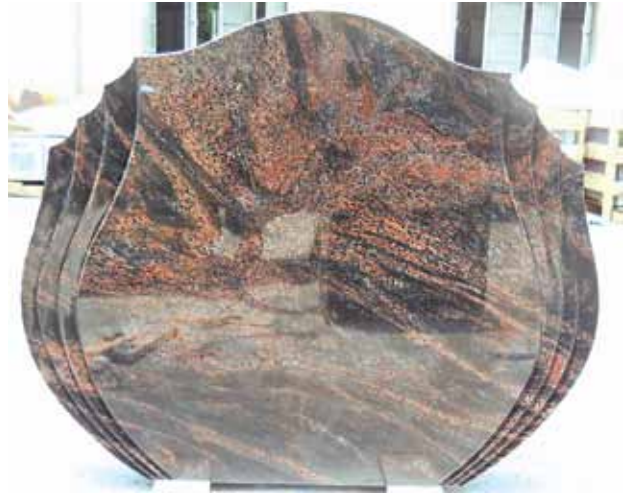
# MONUMENTS



LOUIS MURPHY  
OF  
MR. CHARLES CAVAN DUFFY  
BORN AT WICKLOUGH (27 APRIL 1816)  
DIED AT WICK 9<sup>th</sup> FEBRUARY 1883  
Aged 66 years  
Laid to rest in the  
Catholic Cemetery at Wick  
Wick, Co. Wick  
REPOSES IN PEACE

REST FOR THE SOULS  
OF  
RICHARD BOSSETT  
BORN 1798 DIED 1864  
AND HIS WIFE  
REBECCA LOUISA  
BORN 1798 DIED 1864  
AND THEIR SON  
JAMES BOSSETT  
BORN 1821 DIED 1881  
AND THEIR DAUGHTER ETHEL  
BORN 1848 DIED 1881  
R. I. P.





# MOULDINGS

Granites/marbles are available in various sizes of files & slabs with various finishes for natural stone flooring.

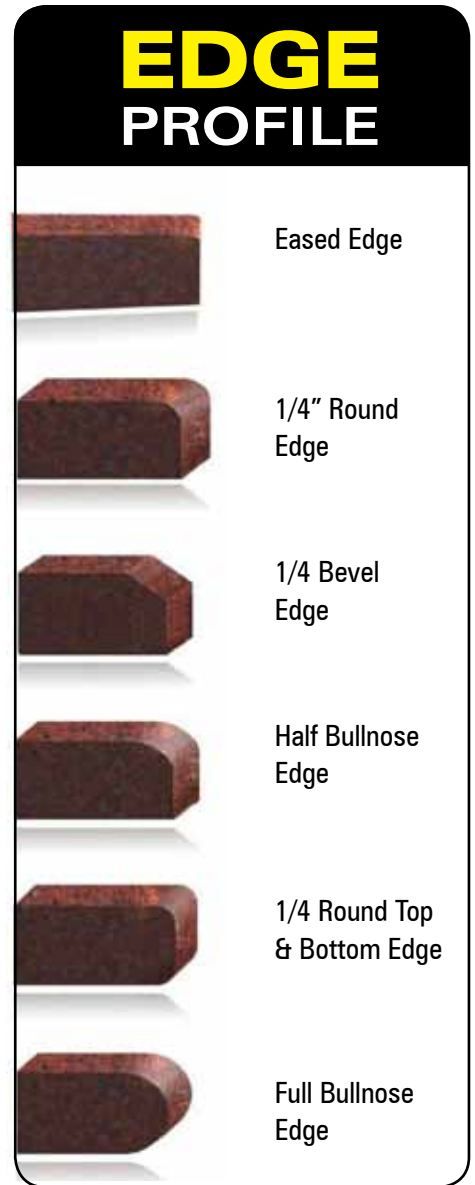
**Slabs:** In various thicknesses ranging from 2, 3, 4 cm. All other custom thickness can be made upon specific request.

**Cutter Slab:** 60 - 90 x 120 - 200 cm in various thicknesses.

**Gang Saw:** 90 - 200 x 200 - 300 cm in various thicknesses

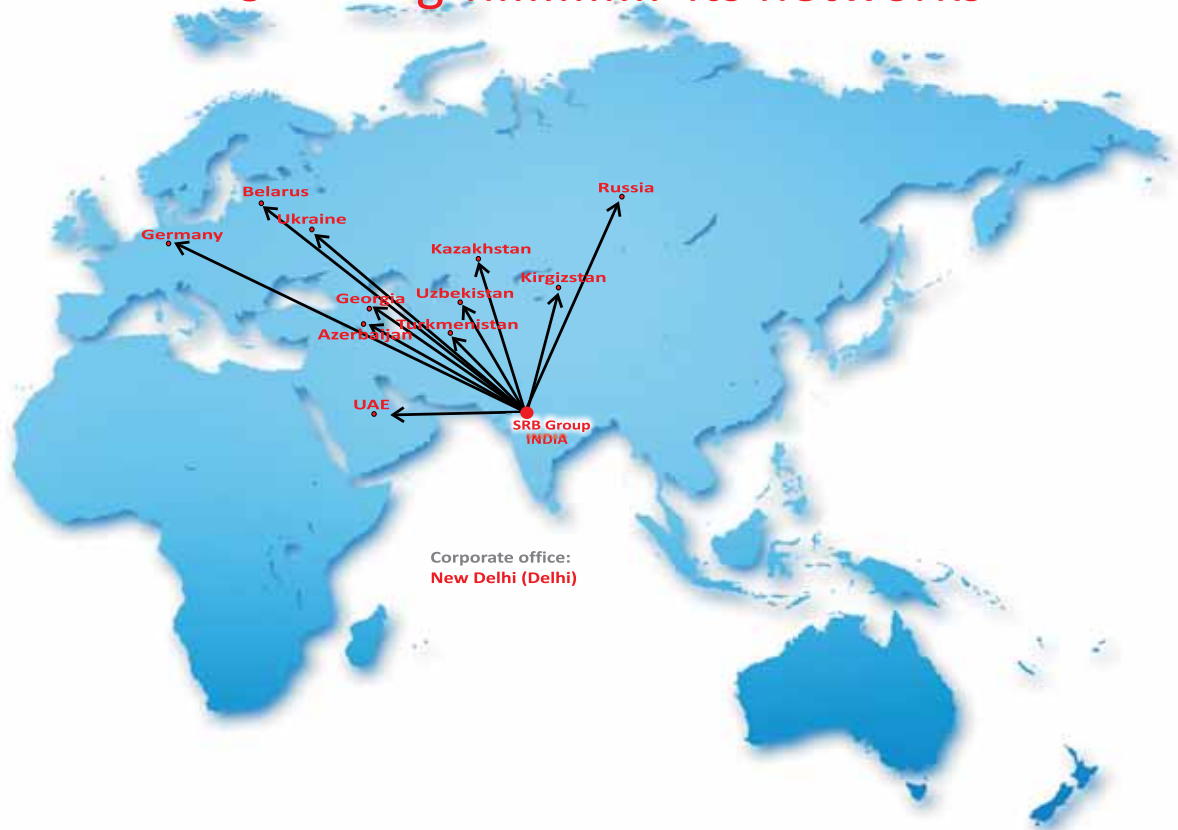
**Tiles:** Tiles of sizes varying from 60 x 60 cm to 60 x 30 cm in various thicknesses.

CONTAINER LOADABILITY			
Material	Thickness	Total Square Meter in 20 feet container	Total Tones
Slab	2 cm	350	25 to 27 tones
Slab	3 cm	250	
Tiles	2 cm	425	
Tiles	3 cm	325	





## SRB'S strength..... Its networks



**SRB GROUP**

**Corporate Office:**

B-25, Second floor,  
Lajpat Nagar-II,  
New Delhi - 110024  
Tel: 011- 46547172 - 80  
Fax: 011 - 40522412  
e-mail: [info@srbgroup.in](mailto:info@srbgroup.in)  
[www.srbinternational.in](http://www.srbinternational.in),  
[www.srbgroup.in](http://www.srbgroup.in)

**Overseas Office:**

Russia Leninsky Prospect.  
42 Building 1, Office 2439,  
Moscow - 119119, Russia  
Mob: + 79646436179  
Email - [moscow@srbgroup.in](mailto:moscow@srbgroup.in)

**Azadlig Prospect - 72**

Flat - 33  
Baku AZ 1073  
Azerbaijan  
Tel: +99412 4406701  
Mob: +99470 3636022