



Qinhuangdao Starry Special Vehicle Co., Ltd.

I. Company Profile

Qinhuangdao Starry Special Vehicle Co., Ltd., right at the exit of Lulong on Beijing-Shenyang highway, in the center of Economic Circle of Bohai-rim Cities – Lulong Longcheng Industrial Park of Qinhuangdao Municipality, 240Km far from the capital Beijing, covers an area of over 60,000m² and has been engaging in road construction and maintenance machinery for over 20 years, aiming at shaping elites for road maintenance.

We have obtained more than 20 national patents since establishment and entered partnership with Tsinghua University, Chang'an University and Highway Research Institute of the Ministry of Transportation, etc. Based on Starry (Xi'an) Research and Development Center, we have developed tremendous special vehicles for highway construction, maintenance, infrastructure and environmental sanitation as well as other road construction and maintenance equipments.

Our products have been spread all over the world, especially exported to Africa, Asia and East Europe, where we are the first company to export slurry seal/microsurfacing truck in China and helps the industry move on in this regard.

“Credit, innovation, service and brand” are our business philosophy. We are dedicated to the development of road maintenance, civil and environmental sanitation undertaking of China and the world, with all efforts to achieve win-win between manufacturer and customer.

For any information, please consult 0086-335-7399999 and we will provide the best and fastest service for you.

II. Medals and Honors

In the philosophy “succeed with expertise & survive with quality”, we have passed ISO9000 quality management system certification and CCC certification (China Compulsory Product Certification) and won countless medals as with various premium products of high cost-performance:

In 2009, prize for the best contribution and the best service of road machinery industry on the 60th anniversary;

In 2008, the best enterprise to foster advantages for intellectual property of Hebei Province;

In 2007, the demonstrative enterprise of technological innovation of Hebei Province;

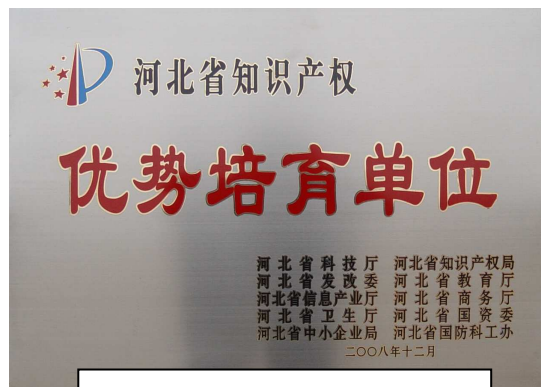
In 2006, name brand products of Hebei province, trustworthy quality products of

Our 20 years' expertise guarantees your 100% enjoyment and faith!

Hebei Province, the third group of financing enterprises of good credit and law observance of Hebei Province; high-tech enterprise of Hebei province.



Prize for the best contribution and the best service of road machinery industry on the 60th anniversary



The best enterprise to foster advantages for intellectual property of Hebei Province



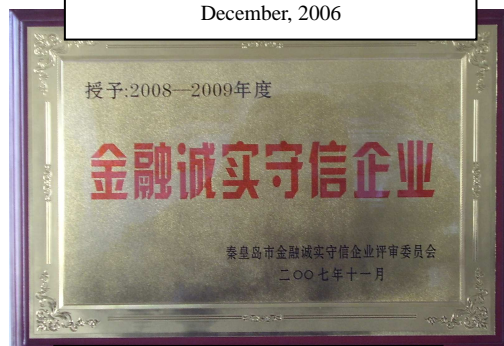
Prize for the best contribution and the best service of road machinery industry on the 60th anniversary



The name brand product of Hebei province
December, 2006



The trustworthy quality product of Hebei Province



The financing enterprise of good credit and law observance of Hebei Province



High-tech enterprise of Hebei province



The name brand product of Hebei province
July 12, 2007

Our 20 years' expertise guarantees your 100% enjoyment and faith!

III. Product portfolio

i. Highway engineering machinery

1. Slurry seal/micro-surfacing paver

1) HRF-100 smart (micro-surfacing) modified emulsified asphalt slurry seal paver



Vehicle introduction

HRF-100 slurry seal paver is the first automatic smart machine with computer-aid touch panel operating system, under menu-based operation, easy to use. The machine is manufactured in advanced electricity/emulsion ration control technology resulting in integrated and cutting edge control as well as accurate preparation of slurry compound so that the customer will be able to control construction costs correctly with accurate parameters of material consumption.



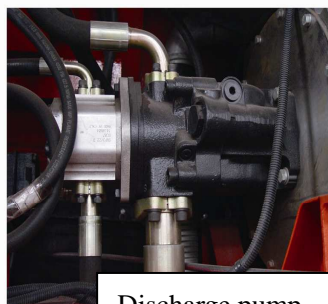
Deutz air-cooling
diesel engine

辅机采用德国道依茨风冷柴油机



Steel additive tank

不锈钢外加剂罐



Discharge pump

进口输出泵



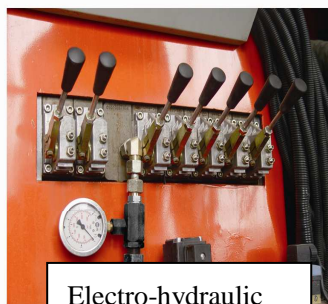
Touch panel

电脑触摸屏



Control system

控制系统



Electro-hydraulic
proportional valve

进口电、液比例阀



Hydraulic motor

进口液压马达



Solenoid
controlling valve



Asphalt pump

进口沥青泵



Large capacity
hydraulic tank



Outlet of cement
hopper



Manual control system



★ Main technical features:

- ◎ Computer touch panel for operation, starting with one key;
- ◎ Closed loop control, real-time monitoring;
- ◎ Print-out for cost accounting;
- ◎ Integrated control implementation system of electro-hydraulic proportional valve;
- ◎ Fault detection and alarm;
- ◎ Shutdown under starving (e.g. oil, water and aggregate failure);
- ◎ Automatic hoisting of fine mineral materials;
- ◎ Injection of additives under pressure;
- ◎ Front and rear sprinkling system;
- ◎ Imported electromagnetic asphalt flowmeter for precise flow monitoring;
- ◎ Command of shutdown for cleaning and independent diesel cleaning system;
- ◎ Operation directly on the laboratory proportion or the formula set by customer, no need to do multiple tests on the site under different construction conditions.

★ Technical parameters:

Truck model	HRF100	Fuel type	柴油 Diesel
Chassis model	ND1252B34J (standard)	Tyre size	12.00-20
Vehicle Notification No.:	SJT5254TYL/	Dimension (L x W x H)	9240×2500×3430mm
Engine model	1608F012045	Cab capacity	2
Max. Power	213kw	Unladen mass	15,500kg
Aux. power	74kw	Rated loading capacity	9,370kg
Delivery capacity	9726ml	Number of spring pieces	10/13
Gross mass (full load)	25,000kg	Tread (F/R)	1,995/1,800mm
Wheel base	3,450+1,450mm	Steering mode	Steering wheel
Number of axles	3	Aggregate tank capacity	10m ³
Aux. tank capacity	2×0.24 m ³	Water tank capacity	2700L
Emulsion tank capacity	2700L	Sealing width	2.8-4.2m
Max. traveling speed	80km/h	Sealing thickness	3-15mm

Our 20 years' expertise guarantees your 100% enjoyment and faith!

2) HRF-100A hydraulic (micro-surfacing) slurry seal paver



★ **Vehicle introduction:**

HRF-100A slurry seal paver is a new generation of most-up-to-date modified (micro-surfacing) slurry seal paver developed and designed proprietarily based on introduction and improvement of foreign advanced technologies, easy to operate and reliable to control.

★ Technical features:

1. PLC control, hydraulic coaxial drive
2. Rear accelerator for control of operating speed
3. Digital display of electronic metrology, more accurate preparation
4. Large capacity of spreader box, precision cast mixing blade with wear resistant material
5. Widened hydraulic mechanism of hydraulic spreader box for maximum 4200mm;
6. U.S. variable rotor piston asphalt pump (shell heat pump with more stable performance);
7. Leveling device for mixing cylinder at the range of $\pm 6^\circ$.
8. Unique diesel circulating cleaning system.

★ Technical parameters:

Model of chassis: Beiben ND1252B34J Foton Auman BJ3257DLPJB-S (optional)

Vehicle Notification No.: SJT5254TYL SJT5252TYL

Auxiliary power: Germany DEUTZ engine (BF4L913 74KW air-cooling)

Gross mass (full load): 25,000 kg

Capacity of aggregate storage: 10m3

Capacity of cement hopper: $2 \times 0.24 \text{ m}^3$

Emulsion capacity: 2,700L

Water capacity: 2,700L

Max. flow rate of asphalt pump : 300 L/min

Paving thickness : 3-15 mm

Paving width: 2.8-4.2 m

Our 20 years' expertise guarantees your 100% enjoyment and faith!

3) HRF-100B hydraulic (micro-surfacing) slurry seal paver



★ Technical parameters:

Chassis: Beiqi Foton Auman BJ3257DLPJB-S

Gross weight (full load): 25,000 kg

Upload specifications:

Capacity of aggregate storage: 10 m³

Emulsion capacity: 2,900L

Water capacity: 2,900L

Capacity of mineral fines: 0.35 m³

Capacity of fiber compartment: 0.35 m³

Capacity of additive container: 300 L

Mode of engine: DECE 4BT-3.9C, 80kw water-cooling diesel engine

Productivity of mixing hopper (kg/min.): ≤ 2500

Paving speed (km/h): > 1.6

4) RF-100A (micro-surfacing) modified slurry seal paver



★ Vehicle Introduction

Mechanical and hydraulic RF-100A slurry seal paver is configured to be cost-efficient and reliable.

This model of seal paver is capable of slurry seal for preventive highway maintenance and micro-surfacing operation and lower seal construction of new highway, affordable, cost-efficient and well functioned.

★ Technical parameters:

Model of chassis: Auman BJ3257DLPJB-S (standard), Beiben ND1252B34J (standard)

Vehicle notification no.: SJT5252TYL/ SJT5254TYL

Auxiliary power: 81 kw

Capacity of additive container: 300L

Capacity of aggregate storage: 10m³

Capacity of cement hopper: 2×0.24m³

Emulsion capacity: 2,900L

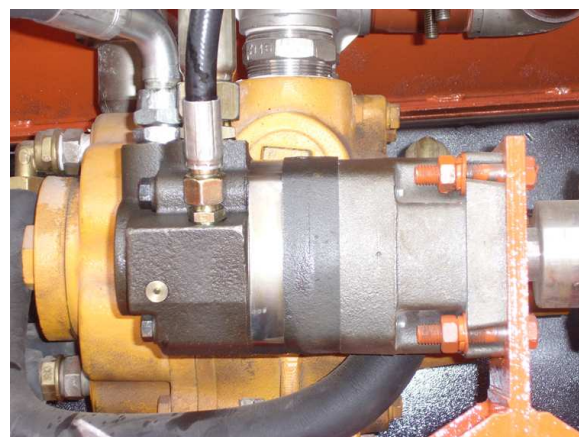
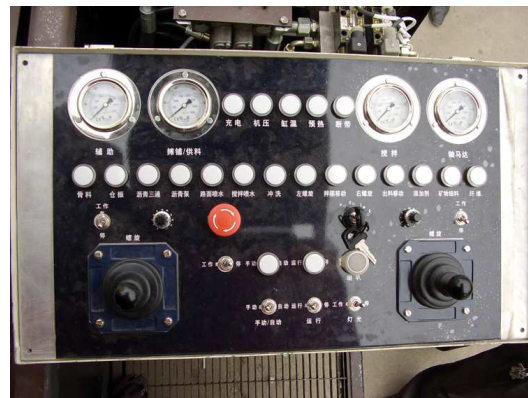
Water capacity: 2,900 L

Max. flow rate of asphalt pump: 300 L/min

Seal thickness: 3-15 mm

Seal width: 2.8-4.2 m

Our 20 years' expertise guarantees your 100% enjoyment and faith!



Our 20 years' expertise guarantees your 100% enjoyment and faith!



5) Self-propelled compact color slurry seal/micro-surfacing paver

The slurry seal/micro-surfacing paver M700 is used for sealing and micro-surfacing, especially applicable to narrow construction sites, e.g. parking lot, garage field & sidewalk, which are not easy to maintain for large facilities. In order to accommodate to social development and help improve the environment, M700 truck is specifically for color marking of pavement, e.g. color overlay of bicycle and pedestrian path as well as community road.

★ Specifications:

Length: 4 m
Width: 1.42m
Height: 1.60 m
Wheelbase: 1.8 m
Gross mass: 9500kg
Specifications of chassis
Drive mode: hydraulic drive
Turn Radius: 4.5m
Working Speed: 1.6-2.5km/h

★ Operating parameters:

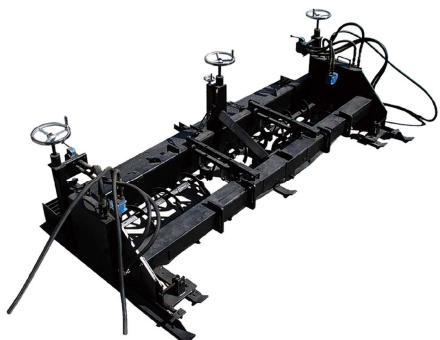
Aggregate Capacity: 1.5m³
Emulsion Capacity: 675L
Capacity of water tank: 675L
Capacity of Fines: 50 L
Capacity of Additive Container: 50 L
Fuel Tank: 150 L
Hydraulic oil Tank: 200 L
Mixing hopper: 700kg/min

★ M700 optional parts:

1. Electronic water and additive flow meter;
2. Touch panel monitoring and operating system;
3. High pressure cleaning system and pipe reel;
4. Four-wheel drive, differential system, two shifts for traveling
5. Optional track spreader box for filling and repair of track;
6. Front and rear driver seat for operation;
7. Peristaltic emulsified asphalt pump for color seal

2. Spreader box

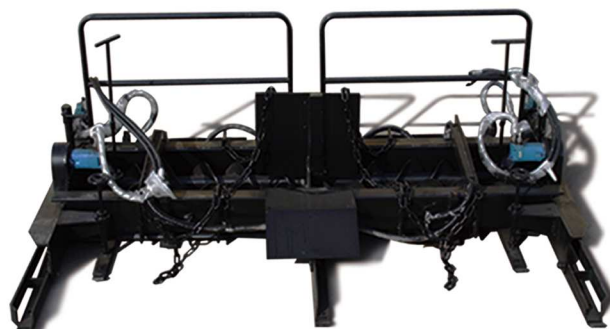
1) SNT4200 mechanical widened hydraulic flexible spreader box



This spreader box is designed for micro-surfacing and speeding up construction of slurry seal at the variable hydraulic width 2.8-4.2m. Widening based on the 15cm lengthening mechanism, with adjustable primary and secondary scraper plate for height above the ground at three locations, strip spiral at diameter 250mm, hydraulic drive, polyethylene spiral bearing, it is economic, practical and easy to maintain.

2) SST3800 variable & retractable spreader box

This spreader box is designed for slurry seal construction. The distribution width is controlled via the hydraulic valve on the box controlling the oil cylinder within the retractable frame. The strip spiral is retractile too, primary and secondary scrapers move in dedicated track slot, retractable within the distribution width 2.5-3.8m.



3) CZT110-180 track spreader box



The track spreader box is specifically designed for filling and repair of track, with two independent adjustable V-shaped spirals ensuring large aggregates to be filled in the depth of track after mixing, 1.1-1.8m wide.

3. Asphalt distributor

1) Starry smart asphalt distributor

★ Basic component

The distributor is made up by chassis, asphalt tank, asphalt pump, conduction oil heating system, electrical and automatic control system and cleaning system, etc. with main units made of the most up-to-date components in the international community, all-round control with micro-computer, high distribution precision.

★ Main parameters

Model	LQS4	LQS7	LQS8	LQS10	LQS12
Chassis	Forland Yu-wei <u>BJ1103VEPFA-S</u>	Foton Lion <u>BJ5163ELFFD</u>	Shaanxi Automobile SX1165UN461	Shaanxi Automobile SX1225UM434	Beiben ND1254B44J
Vehicle notification no.	SJT5101GLQ	SJT5160GLQ	SJT5161GLQ	SJT5251GLQ	SJT5252GLQ
Capacity of asphalt tank (L)	4000	6800	8000	11000	12000
Max. distribution width(m)	4.5	6	6	6	6
Distribution capacity (kg/m ²)	0.3-2.5	0.2-3	0.2-3	0.2-3	0.2-3
Heating Mode	Diesel Burner Heat capacity				
	8×10 ⁴ Kcal/h	12×10 ⁴ Kcal/h	14×10 ⁴ Kcal/h	19×10 ⁴ Kcal/h	20×10 ⁴ Kcal/h
Average Temp. Drop (°C/h)	≤1	≤1	≤1.5	≤1.5	≤1.5

★ Major features:

- 1) Three layers of overlapped cloth for spray, adjustable distribution capacity based on the traveling speed, totally operable in the cabin for distribution
- 2) Separate control with computer at each spraybar of adjustable width.
- 3) Two control systems in the control process for the whole truck (cabin and rear operating platform) to ensure reliable and successful asphalt distribution.
- 4) All-round heating of pump, spraybar and tank with conduction oil or separate heating.
- 5) Safe and reliable conduction oil heating system for fully automatic control
- 6) Optional radar speed measurement system

2) Starry semi-smart asphalt distributor

Our 20 years' expertise guarantees your 100% enjoyment and faith!



★ Basic component

The distributor is made up by chassis, asphalt tank, asphalt pump, conduction oil heating system, electrical control system, cleaning system, touch panel monitoring system, etc.

★ Main parameters

Model	LQB4	LQB6	LQB7	LQB8	LQB10	LQB12
Chassis	Forland YU-wei <u>BJ1103VEPFA-S</u>	Diamond Age BJ3163DKPFG-1	Foton Lion BJ5163ELF FD	Shaanxi Automobile SX1165UN46 1	Shaanxi Automobile SX1225UM 434	Beiben ND1254B44J
Vehicle notification no.	SJT5101GLQ	SJT5162GLQ	SJT5160GL Q	SJT5161GLQ	SJT5251GL Q	SJT5252GL Q
Capacity of asphalt tank (L)	4000	6000	6800	8000	11000	12000
Max. distribution width(m)	4.5	6	6	6	6	6
Distribution capacity (kg/m ²)	0.3-2.5	0.3-3	6	0.3-3	0.3-3	0.3-3
Heating Mode	Diesel Burner Heat capacity					
	8×10 ⁴ Kcal/h	10×10 ⁴ Kcal/h		14×10 ⁴ Kcal /h	19×10 ⁴ Kcal/h	20×10 ⁴ Kcal/h
Average Temp. Drop (°C/h)	≤1	≤1	≤1.5	≤1.5	≤1.5	≤1.5

★ Major features

- 1) Hydraulic power take-off for the chassis, menu operation and asphalt distribution and heating monitoring with touch panel in the cab
- 2) Two control systems in the control process for the whole truck (cabin and rear operating platform) to ensure reliable and successful asphalt distribution.
- 3) All-round heating of pump, spraybar and tank with conduction oil or separate heating.
- 4) Safe and reliable conduction oil heating system for fully automatic control.

3) Starry Electronic Control Asphalt Distributor

★ Basic component

The asphalt distributor is made up by chassis, asphalt tank, asphalt pump, optional conduction oil heating system, electronic control system and spraybar system, etc.

★ Main parameters

Model	LQP3	LQP4	LQP6	LQP8	LQP10
Chassis	Forland BJ1073VEJB4-S	Forland Yu-wei BJ1103VEPFA-S	Diamond Age BJ5168GJB-1	Shaanxi Automobile SX1225UM434	Beiben ND1254B44J
Vehicle notification no.		SJT5101GLQ	SJT5162GLQ	SJT5251GLQ	SJT5252GLQ
Capacity of asphalt tank (L)	3000	4000	6000	8000	11000
Max. distribution width(m)	4	4.5	6	6	6
Distribution capacity (kg/m ²)	0.3-1.8	0.3-2.5	0.3-3	0.3-3	0.3-3
Distribution precision (%)	≤2				
Heating mode	Diesel burner Heat capacity				
	8×10 ⁴ Kcal/h	8×10 ⁴ Kcal/h	10×10 ⁴ Kcal/h	15×10 ⁴ Kcal/h	19×10 ⁴ Kcal/h
Average Temp. Drop (°C/h)	≤1	≤1	≤1	≤1.5	≤1.5

★ Major features:

- 1) Digital display meters and instruments to indicate speed of the vehicle and the asphalt pump rotation, as well as temperature of asphalt inside the tank.
- 2) Possesses heat preservation, conduction oil recycling heating, transportation, spray, pumping and discharge function, etc.
- 3) Nozzle controlled through pneumatic joint control operation of cylinder for opening and closing.
- 4) Cleaning system of compressed air

Our 20 years' expertise guarantees your 100% enjoyment and faith!



5) Hydraulic power take-off of chassis or auxiliary diesel engine for drive, heated with burner, optional conduction oil recycling system.

4) Starry intelligent rubber asphalt distributor

★ Basic component

This distributor is derived from the smart asphalt distributor by adding dual-burner heating system and dual horizontal-axle forced mixing system to adapt to distribution of rubber asphalt.

★ Main parameters:

Model	LQR8	LQR10	
Chassis	Sha'anxi Auto SX1165UN461	Sha'anxi Auto SX1225UM434	Beiben ND1254B44J
Vehicle notification no.	SJT5161GLQ	SJT5251GLQ	SJT5252GLQ
Capacity of asphalt tank	8000	11000	
Max. distribution width	4-6	4-6	
Distribution capacity (kg/m ²)	0.2-3	0.2-3	
Distribution precision (%)	≤2	≤2	
Asphalt heating method	Dual Diesel Burner Heat capacity		
	26×10 ⁴ Kcal/h	30×10 ⁴ Kcal/h	
Average temp. drop	≤1	≤1.5	
Mixing method	Hydraulic driven biax mixer		
Fineness of rubber powder (mesh)	≥20	≥20	
Temperature rise index of rubber (℃/h)	20	20	
Content of rubber powder	≤25%	≤25%	

★ Major features:

1. Biax spiral forced mixing device built in the asphalt tank to prevent segregation and sedimentation of rubber & asphalt.
2. Dual-chamber combustion system for asphalt tank.
3. Sprinkling system under automatic control of distribution volume.

Our 20 years' expertise guarantees your 100% enjoyment and faith!

1. Starry synchronous chip sealer

★ Basic component

The chip sealer machine is made up with chassis, asphalt tank, asphalt pump, conduction oil heating system, electrical and automatic control system, cleaning system, chip hopper and chip spray system etc. with main units made of the most up-to-date components in the international community, all-round control with micro-computer, high distribution and spraying precision.

2. Main parameters

Model	TBS3500	TBS4000	TBJ3800
Chassis	Beiben ND1254B44J	Beiben ND1315D41J	Beiben ND1254B44J
Notification of finished truck	SJT5251TBS	SJT5310TBS	SJT5251TBS
Capacity of asphalt tank (L)	6000	6000	8000
Capacity of chip hopper m ³	10	12	10
Max. spread width(m)	3.5	4	3.8
Spray Quantity (kg/ m ²)	0.3-3	0.3-3	0.3-3
Distribution Precision (%)	≤1	≤1	≤1
Asphalt Heating Mode	Diesel Burner Heat capacity		
	14×10 ⁴ Kcal/h	14×10 ⁴ Kcal/h	19×10 ⁴ Kcal/h
Average Temp. Drop (°C/h)	≤1.5	≤1.5	≤1.5
Chipping size(mm)	5-25		
Feeding method	Composite unloading	Dual-belt feeding	Gravity discharge
Asphalt mixing method	N/A	N/A	Dual-axle forced mixing
Applicability	Emulsified asphalt, common asphalt, modified asphalt & synchronous chip sealing	Emulsified asphalt, common asphalt, modified asphalt & synchronous chip sealing	Emulsified asphalt, common asphalt, modified asphalt, rubber asphalt & synchronous chip sealing



TBJ3800 Design sketch

★ Major features:

- 1). Smart control of asphalt and chippings distribution, real-time monitoring closed loop control of asphalt and chippings distribution and vehicle speed;
- 2). Special designed chipping hopper, stable and reliable, operable for overpass and tunnel construction with constant center of gravity
- 3). Monitor and maneuver the operation at any time through the touch panel, with beautiful operation interface, easy to operate and control.
- 4). Asphalt combination valve applied for less valves and convenience and ease of operation.
- 5). With both manual and automatic control system, allowing for operation both on the rear operating platform and in the cab.

ii. Civil and sanitation truck

1. YS16 compression type garbage truck



Starry back-loading compression type truck is applied with integrated hydraulic and electric transmission and control technology along with dedicated loader to load, crush or flattening garbage, then compress and shirk off garbage, diverting sewage into the effluent tank and accordingly eliminating secondary pollution in transportation of garbage.

★ Specifications:

Item	Specifications
Capacity of garbage container	16 m ³
Capacity of loader	1 m ³
Gross mass	19000 kg
Curb weight	11300 kg
Operating cycle of loader	25-30s
Unloading cycle	20-50 s
Rated working pressure of hydraulic system	12-18/bar
Outline dimension/mm (L x W x H)	8600×2495×3065 mm
Compartment dimension/mm (L x W x H)	5420×2300×1600 mm
Wheelbase	4600mm
Power take-off	PTO

Our 20 years' expertise guarantees your 100% enjoyment and faith!

2. LB5 roll-off garbage truck

This garbage truck is made up of hydraulic system, operating system, double-acting lift cylinder (1) and so on. The garbage container may be hoisted and lowered, under auto-dumping of garbage. The largest advantage of the truck is that multiple garbage containers may be equipped on the chassis for cross operation and circulating transportation so that the transportation capacity and working efficiency have been improved significantly.

In terms of different requirements, different capacity of container may be configured. The truck is widely used in refuse storage area.



★ Specifications:

Fuel type	diesel
Dimension (mm)	6640×2360×2600 (with container)
Emission standard	Euro III
Rated load(kg)	5000
Hook load (kg)	10000
Time for container loading (s)	≤50
Lift time for discharging(s)	≤60
Time for container descending (s)	≤65
Max. lift angle for container(°)	50
Power take-off	PTO

Our 20 years' expertise guarantees your 100% enjoyment and faith!

3. Combined suction-type sewer scavenger



XW8 combined sewer scavenger

★ Application range:

Effluent of solid and liquid wastes in urban environmental sanitation, dredging and scavenging of sewer pipes and inspection shafts

★ Operation mode:

High pressure hydraulic flushing, vacuum suction and pumping, suction of dry sludge with fan, combination of flushing and suction

System composition: dirt tank: 8000L Water tank: 3000L

Three-cylinder pump: continuous adjustable at pressure 0—155bar and flow 270L/min.

Operating platform: integrated or self-contained operating platform, easy to access

Transmission arm: hydraulic drive, rotation angle up to 270°

Hose coil: rear built, horizontally adjustable at $\pm 100^\circ$; 120m high pressure hose

Blowdown system: rear hydraulic multi-stage cylinder making the tank 45° declined backward, 6" discharge valve, easy to discharge liquid, fully operable rear cover, hydraulic starting and locking.

Vacuum system: — 0.06MPa vacuum degree

Water recycling system: the system sucks effluent from sewer in vacuum and clears all slag particles that may damage the pump compete with stores recyclable liquid in the tank.

Our 20 years' expertise guarantees your 100% enjoyment and faith!

4. Aerial cage

Our products are widely used in operation for street lamp, electricity, traffic warden, highway, ship building and repair, communications, architecture, gardening, advertising, airport, port, cable TV and large industrial and mining enterprises, etc.



★ Key specifications

Model	GZ14	Gross mass	6495
Model of Chassis	Aumark BJ1069VEJD6-AS	Notification number of finished vehicle	
Max. operating height (m)	14	Rotary range (°)	±360
Rated load of working hopper (including 2 people) (Kg)	200	Max. working radius (m)	6
Max. elevation of upper arm (°)	70	Max. elevation of lower arm (°)	70
Elevation of lower arm (°)	-90~elevation of upper arm	Max. hoisting load (Kg)	990
Horizontal span of sport legs (front/rear) (mm)	2650	Vertical span of sport legs (mm)	2700
Dimension (L x W x H) (mm)	6460×1990×2982		

Our 20 years' expertise guarantees your 100% enjoyment and faith!

5. Gravel and aggregate screening machine



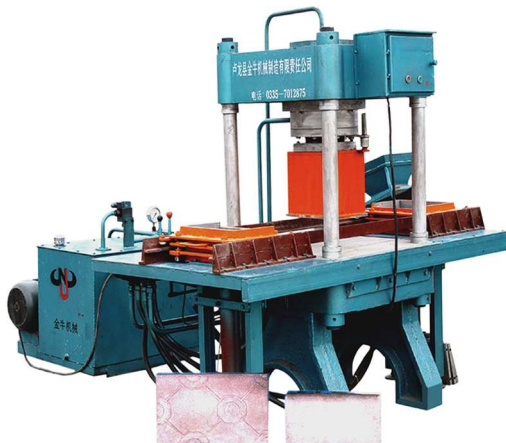
The machine is dedicated to aggregate screening for slurry seal construction preventing oversized aggregates dropping in gradating materials and consequently forming ditches so as to improve the construction quality of road.

★ Technical parameters:

Screening efficiency: PL20/30/40: 20-40t/h; PL80: 80t/h

Supporting power: PL20/30: 15.5kw; PL40: 18.5kw; PL80: 23kw

6. GLS curb hydraulic forming machine



Our GLS hydraulic forming machine is in construction of four housing and gantry synchronized double cylinders and welded high quality steel plates, compact and reasonable in design. It is able to produce all kinds of safety, water retaining curb and pavior brick, lawn brick, slope shielding brick, tree surrounded color arc tiling and other large concrete products.



7. QS1500 sweeper

This sweeper is developed by us independently and it is applicable to cleaning after planing of top grade highway and before slurry seal operation plus snow cleaning.

Technical parameters:

Engine power: 25 H.P. electric start (Foton Tractor 250A)

Working speed: 10-14km/h Sweeping width: 1.5m

Type of brush: wire brush (Φ 300-400)

8. SL2000 sweeper (side brush mounted)



The sweeper operates by driving the roller brush rotate via transmission with the friction between traveling wheels and the ground. Garbage in the guide feed box is moved to the top and cast into the rear hopper along the guiding arc strip with the action of driving force and centrifugal force of brush; driven by the tractor, the sweeper moves

oyment and faith!



on the road to sweep and collect garbage without stop. The machine is also featured in dust removal and noise reduction and free of jam or blockage and damage when cleaning large objects as with hydraulic components for the side brush.

★ Technical parameters:

Working width: 1500mm (side brush type: 2000mm)

Working speed: 8-15km/h

Collection capacity: 0.6 m³

Application: gravels, snow, dust and dirt, leaves and particulate matters sized less than 45mm

iii. Other special-purpose equipment

1. Chippings spreader

SSB3000 chippings spreader



SSB 3000 spreader is applicable to spreading of aggregates in road construction and maintenance; under pneumatic and electric drive and matched with dumper in advanced technology, it is easy to assemble and disassemble. Spreading width: 3.10m, aggregate size: S34-S3, spreading speed: 5km/h, spreading capacity: 0.5~50(m³/km²) (18km²/h)

SBC3000 chippings spreader



2. Starry hot asphalt carrier

A. Basic parameters of semi-trailer hot asphalt carrier



<div>Model</div> <div>Item</div>	BT20	BT40	BT60
Tank capacity	20,000L	40,000L	60,000L
Tank length	8m	12m	15m
Tank width	2450mm		
Axles/tyre of semi-trailer	Fluval rear 2-axle, 12.00radial tyre	Fluval rear 3-axle, 12.00radial tyre	Fluval rear 4-axle, 12.00radial tyre
	Twin/ 12.00	Three/ 12.00	Four/ 12.00
Tank shape	Made of 8mm steel plate, with cylindrical tank, 50mm insulation coating and 0.8mm stainless steel sheet envelope, manhole, self-drain and several clapboards in the tank		
Asphalt pump	For automatic suction and discharge, pump displacement: 900L/min, rotation speed: <900rpm		
Burner	Twin-stage high pressure diesel burner from Italy.		
Heating method	Radiating heating with single U-tube	Radiating heating with dual U-tubes	
Driving Power	Double-cylinder water-cooling diesel engine, power: ≥ 24kW/2300RPM		
Driving mode	Driven by hydraulic pump		
Asphalt discharge	Self-absorption by 4`` pipe asphalt pump		
Burner control	Automatic control with controller		
Power supply	DC 24V battery		

Our 20 years' expertise guarantees your 100% enjoyment and faith!



B. Basic parameters of hot asphalt carrier

Item \ Model	HAT25
Rated load capacity	20000kg
Chassis	Beiben 8X4 1500+4750+1450mm
Tank capacity	25,000L
Tank length	8405mm
Tank width	2450mm
Diesel burner power	2X19×10 ⁴ Kcal/h
Average Temp. Drop (°C/h)	≤1
Tank shape	Made of 8mm steel plate, with cylindrical tank, 50mm insulation coating and 0.8mm stainless steel sheet envelope, manhole, self-drain and several clapboards in the tank
Asphalt pump	For self-absorption and discharge, pump displacement: 900L/min, rotation speed: <900rpm
Burner	High pressure diesel burner from Italy.
Heating method	Radiating heating with dual U-tube
Driving power	Driven by auxiliary diesel engine, Power: 23.5kw
Driving mode	Driven by hydraulic pump
Asphalt discharge	Self-absorption by 4" pipe asphalt pump
Burner control	Automatic control with controller
Power supply	DC 24V battery



★ Starry carrier has following features:

1. Self-contained pump to load asphalt from the outside;
2. Circulation of materials filled in the tank
3. Self-contained pump to deliver external asphalt between different tanks;
4. In-tank materials discharged to the storage.
- 5 Pipeline recycling system, easy to discharge and clean independently.

SHXJ30 slaked lime container



The slaked lime container is an indispensable machine in top grade highway construction.

Technical parameters:

Productivity: 20t/h-30t/h

Max. diameter of particles: $\leq 200\text{mm}$

Gross power: 60kw-69kw

Gross mass: 13t-14t

Movable electric control cabinet plus optional air conditioner

Our 20 years' expertise guarantees your 100% enjoyment and faith!

YDB180 hydraulic pile driver

This piling machine is specially developed for safety barriers for the purpose of satisfying the needs for fast development of highway. It solves the trouble of high labor intensity in highway construction as with too many columns and output of non-standard columns and improves construction quality and speed.

★ Technical parameters:

Engine power: 18KW

Hydraulic pressure: 12MPA

Weight of hydraulic hammer: 110KG

Hoisting capacity: 1.5T

Strike frequency of impactor: 1100 /min

Gross weight: 2400KG

Dimension: 2730×2300×3400



LK-250 curbside trencher



This machine is widely used in trenching at the edge of road and flower terrace in urban and road construction.

★ Technical parameters:

Engine power: 25HP (2 or 3-cylinder)

Trenching depth: 0-270mm

Working speed: 0.47km/h

Travel speed: 10km/h

Trenching width: 60, 80, 100, 125, 150, 200, 250mm

Operating mode: electric start, hydraulic lifting

LK-180 curbside rotary trencher

This machine is applicable to trenching at the edge of road and flower terrace in the street in road construction.



★ Technical parameters:

Engine power: 20H.P.

Trenching depth: 0-180mm

Travel speed: 10km/h

Working speed: 0.7km/h

Trenching width: 63, 80, 100, 125, 150mm

LCI concrete curb paver



This paver is specifically designed to build high grade water curb, with excellent yield of perfect curb line.

★ Technical parameters:

Engine: 195 diesel engine

Power: 12 H.P. or GX390 gasoline engine 13ps