



The Republic of Croatia



Varazdin County



Municipality of Cestica



Croatia's Position in Europe



The Republic of Croatia

Population of Croatia (2011): 4.3 million

Capital city: Zagreb

Surface area: 56,594 km²

Population density: 75,8/ km²

GDP (2018): \$105 billion

GDP per capita (2018): \$27,664

The Republic of Croatia has 21 counties, 128 cities and 428 municipalities.

According to the World Bank's Doing Business Survey, Croatia is ranked **58th of 190 countries** for the ease of doing business (2019).

Some of the most notable Croatian inventions:

- Wireless power transmission – Nikola Tesla
- Alternating current – Nikola Tesla
- The tie – Joža Batalekov
- MP3 player – Tomislav Uzelac
- Parachute – Fraust Vrančić
- The rocket motor – Herman Potočnik
- Torpedo – Ivan Lupis
- Mechanical pen – Slavoljub Eduard Penkala
- Fingerprinting – Juan (Ivan) Vucetich
- And others! .



Varazdin County



The Republic of Croatia

- 176,000 residents (4% of Croatia's population)
- Population density: 139.42 persons / km²
- 6 cities, 22 municipalities, 302 settlements
- 3rd smallest county in Croatia
- Foreign trade with 123 countries
- The most important trade partners:
 - Italy, Germany, Austria, Slovenia, Bosnia and Herzegovina, Slovakia
- Exports: €1.050 billion (7% of Croatia's total)
- Imports: €659 million (4.8% of Croatia's total)
- Number of registered businesses: 3,202



The Municipality of Cestica



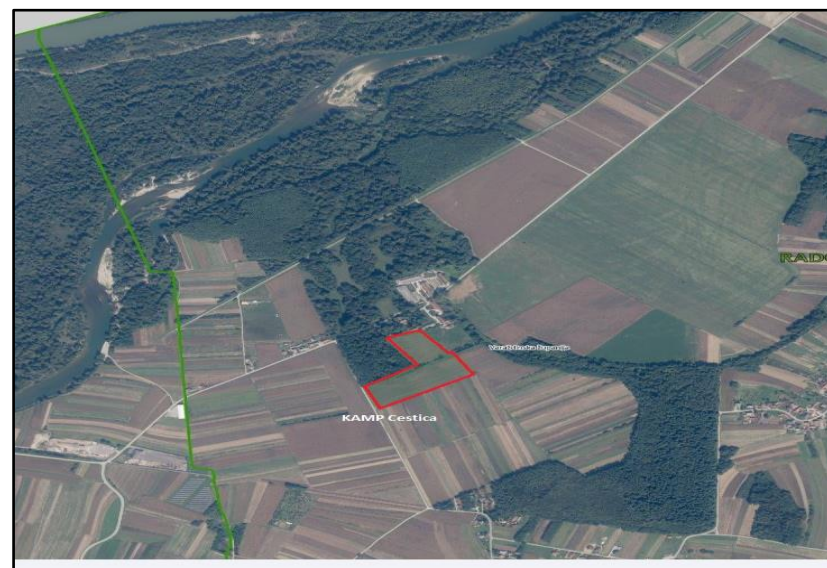
Municipality of Cestica

- 5,806 residents (3.3% of Varazdin County's total)
- Population density: 126/km²
- Surface area: 45.91 km²
- 20 settlements
- 190 – 330 m above sea level
- 37% of the municipality in hilly areas
- 7.5 km of the Drava River flows through Cestica
- 24 km of the municipal border is with Slovenia
- >200 businesses in Cestica
- 26 civil society organizations



KAMP/CAMP CESTICA – Location

- Historical architecture – 23 ha in Cestica
- Complete infrastructure in the town
- Croatian Employment Services office in Cestica
- *main national agency for human resources
- 15 km from Varazdin
- 18 km from the highway Goričan- Zagreb
- 2 km from the railway line (in Slovenia)
- 25 km from the Varazdin airport
- 25 km from the golf course in Ptuj, SLO
- 25 km from the hot springs in Ptuj (SLO) and the Varazdin pool
- 3 km from historic park Arboretum Opeka
- 4 km from the hunting site of Zelendvor
- 35 km from the Castle of Trakoscan
- 25 km from the peak of Mt. Ivancica



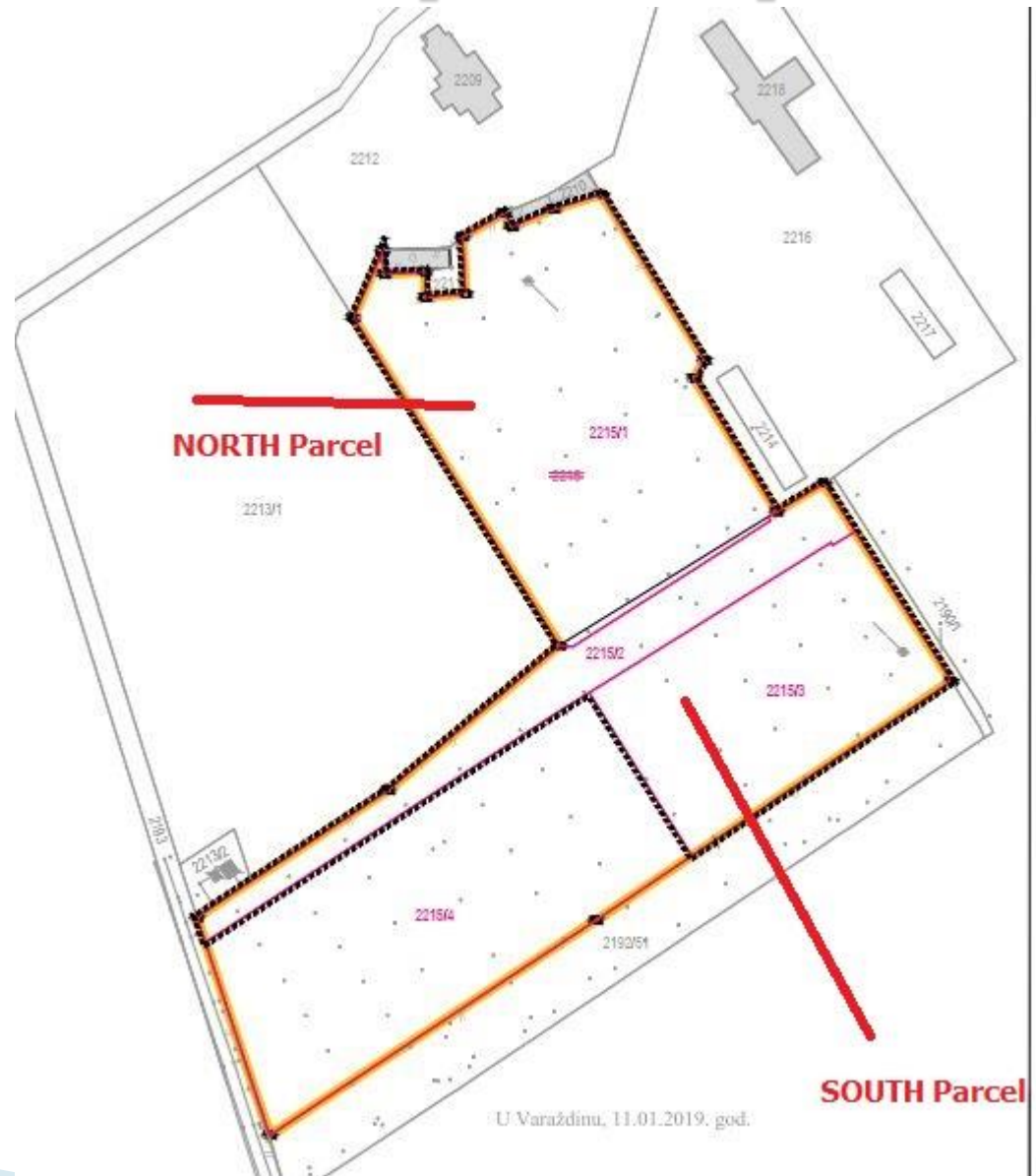
CAMP CESTICA – Spatial plan

Northern parcel

On the northern parcel, camp parcels and spaces are organized.

On the camp parcels, mobile camping houses and tent spaces are planned.

Parking spaces, sport terrains, walking paths, grassy and green areas, an artificial lake and a restaurant are also planned.



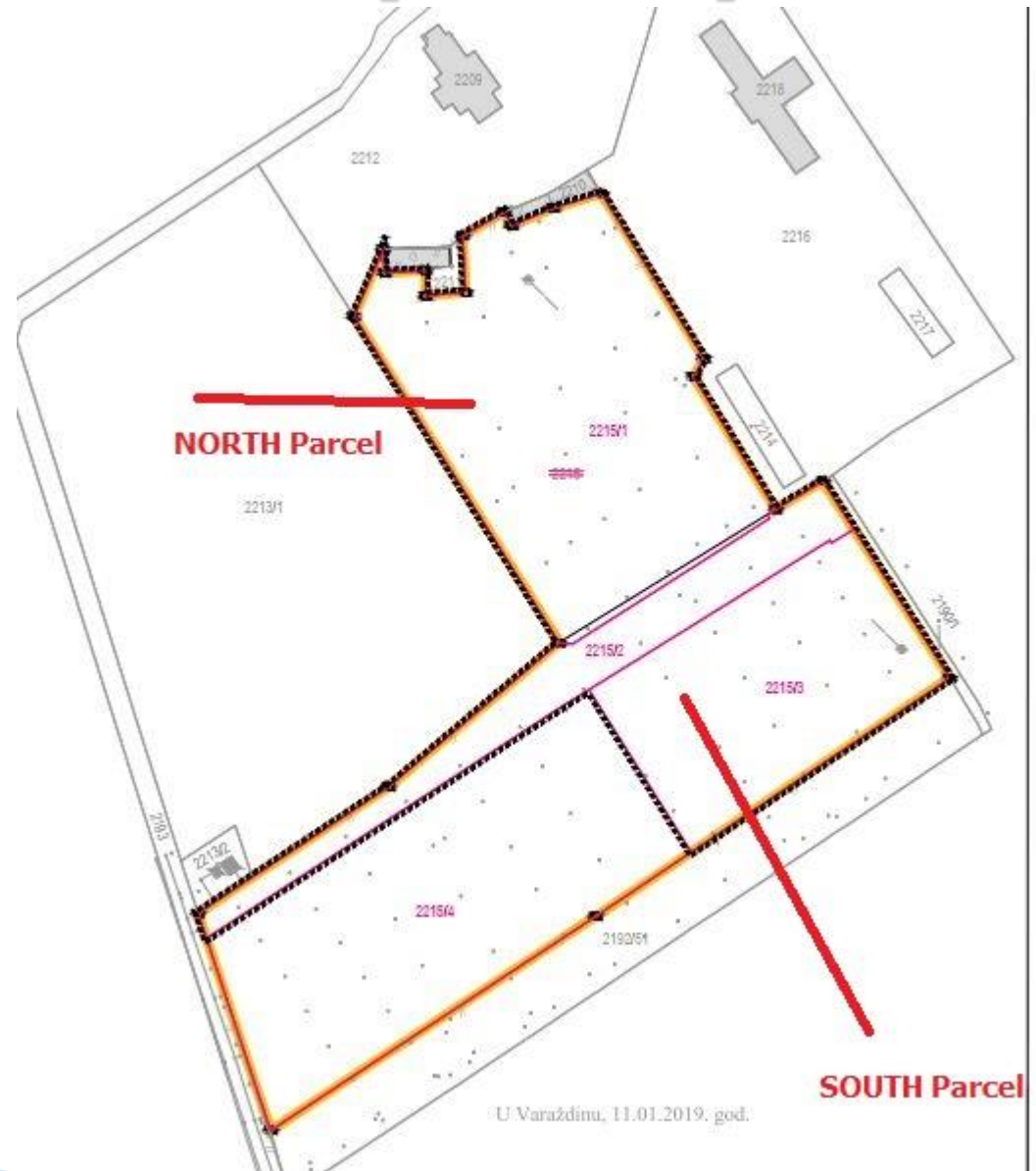
CAMP CESTICA – Spatial plan

Southern parcel

On the southern parcel, camp parcels & spaces for tents and campers will be organized.

Walking paths, access roads, grassy & green areas and two buildings: for camp services and administration are planned.

The parcel is connected by road to public traffic.



CAMP CESTICA – Spatial plan

Access road

The access road is approximately 270m long and is directly connected to Drava Street (dravska ulica) in Cestica.

The planned pavement width is 6m (one lane = 3m). Access to the campsite in the north and south is provided, via its thoroughfare and parking lots.

The dimensions of the parking spaces are 2.5m*5m.

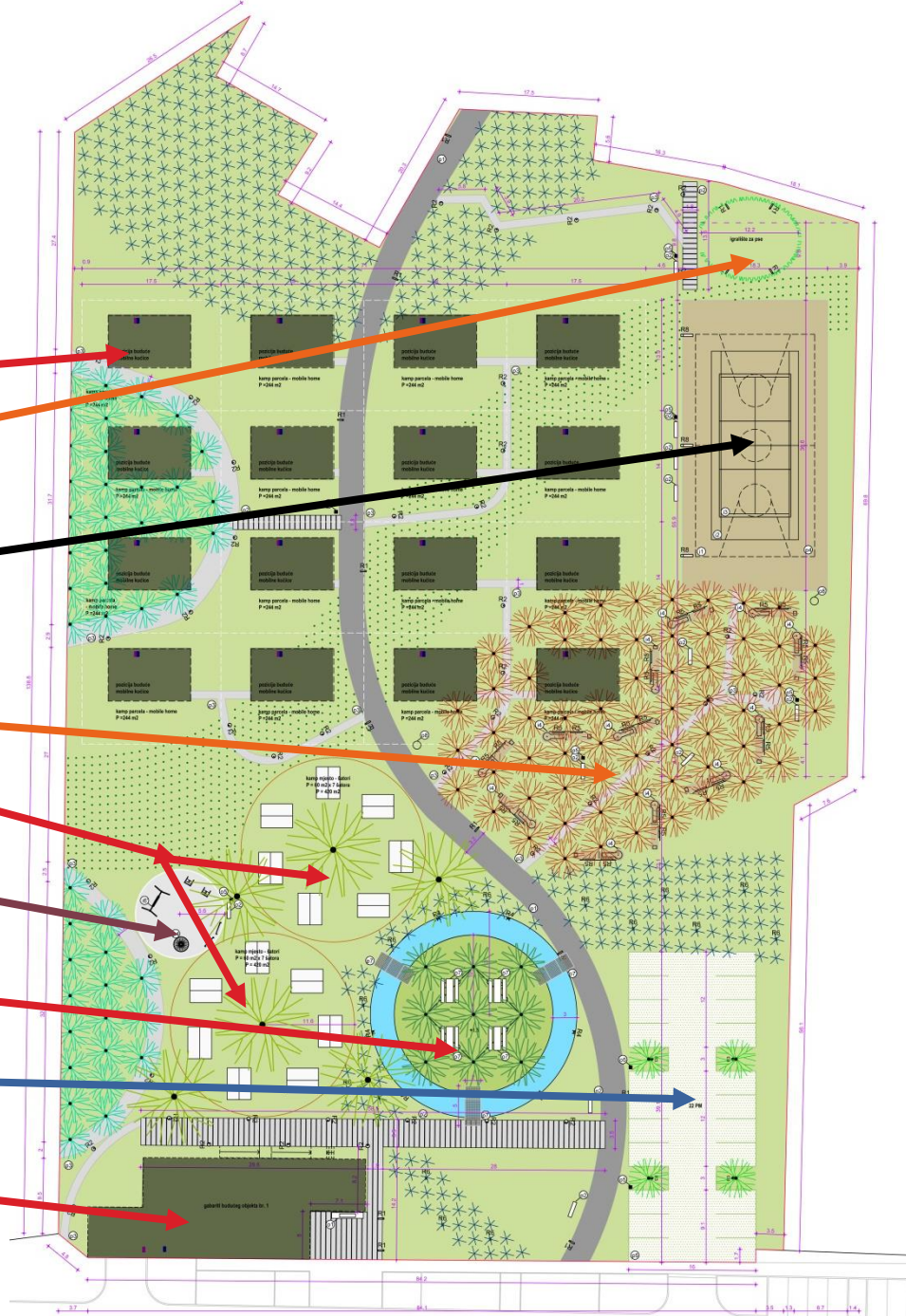
The dimensions of the walking paths are 1.3m*1.5m.



Northern parcel

In the northern parcel, there will be:

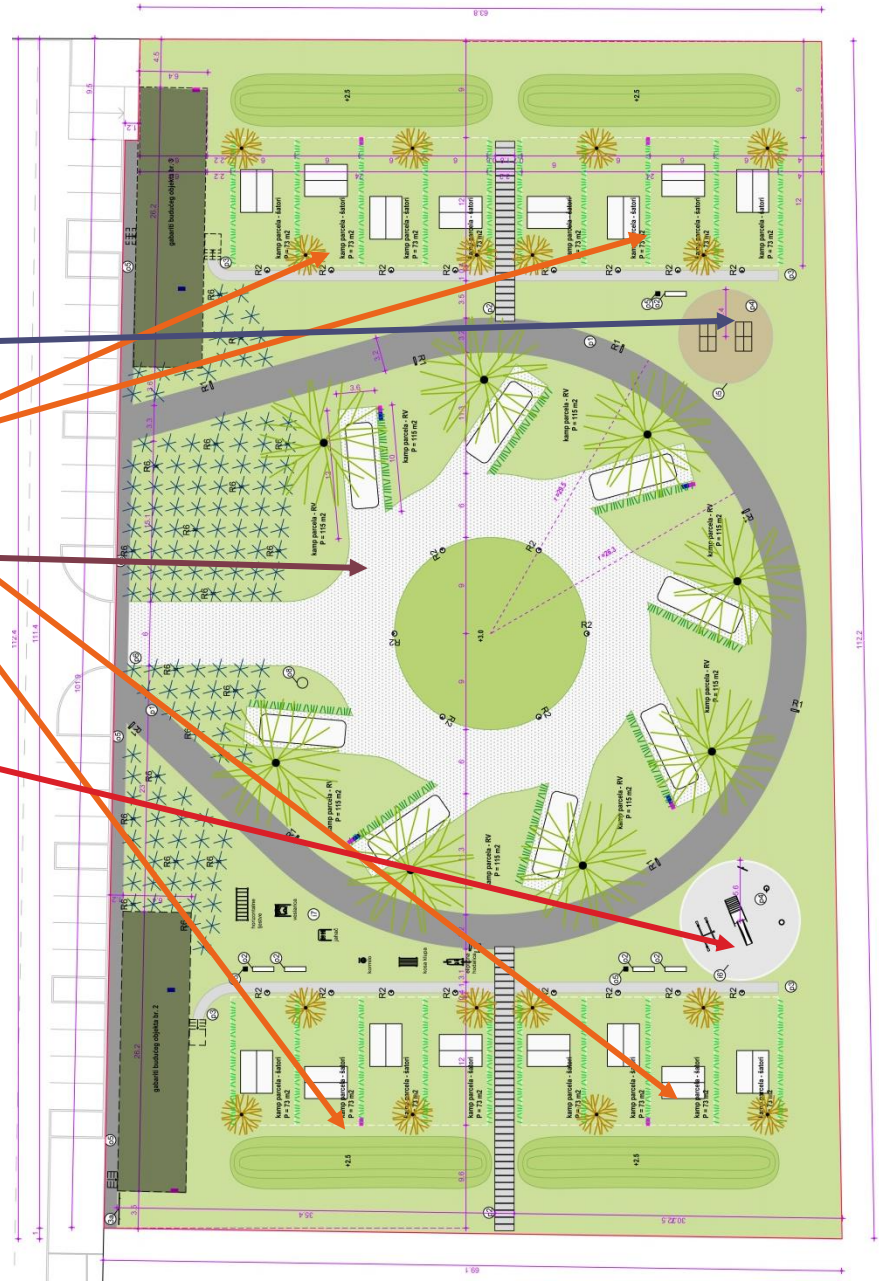
- 16 mobile camp houses
- Playground for dogs with fencing
- Basketball, tennis and volleyball courts on antistress surfaces
- Mini-golf course
- 2 campsites (with 7 tents each)
- Children's playground with antistress surfaces
- Picnic areas surrounded by water
- 22 parking spaces
- Restaurant



Southern parcel

In the southern parcel, there will be:

- Tables for ping-pong
- 4 camp spaces, with 4 tents each
- 8 camp spaces for Recreational Vehicles
- Children's playground



Access road



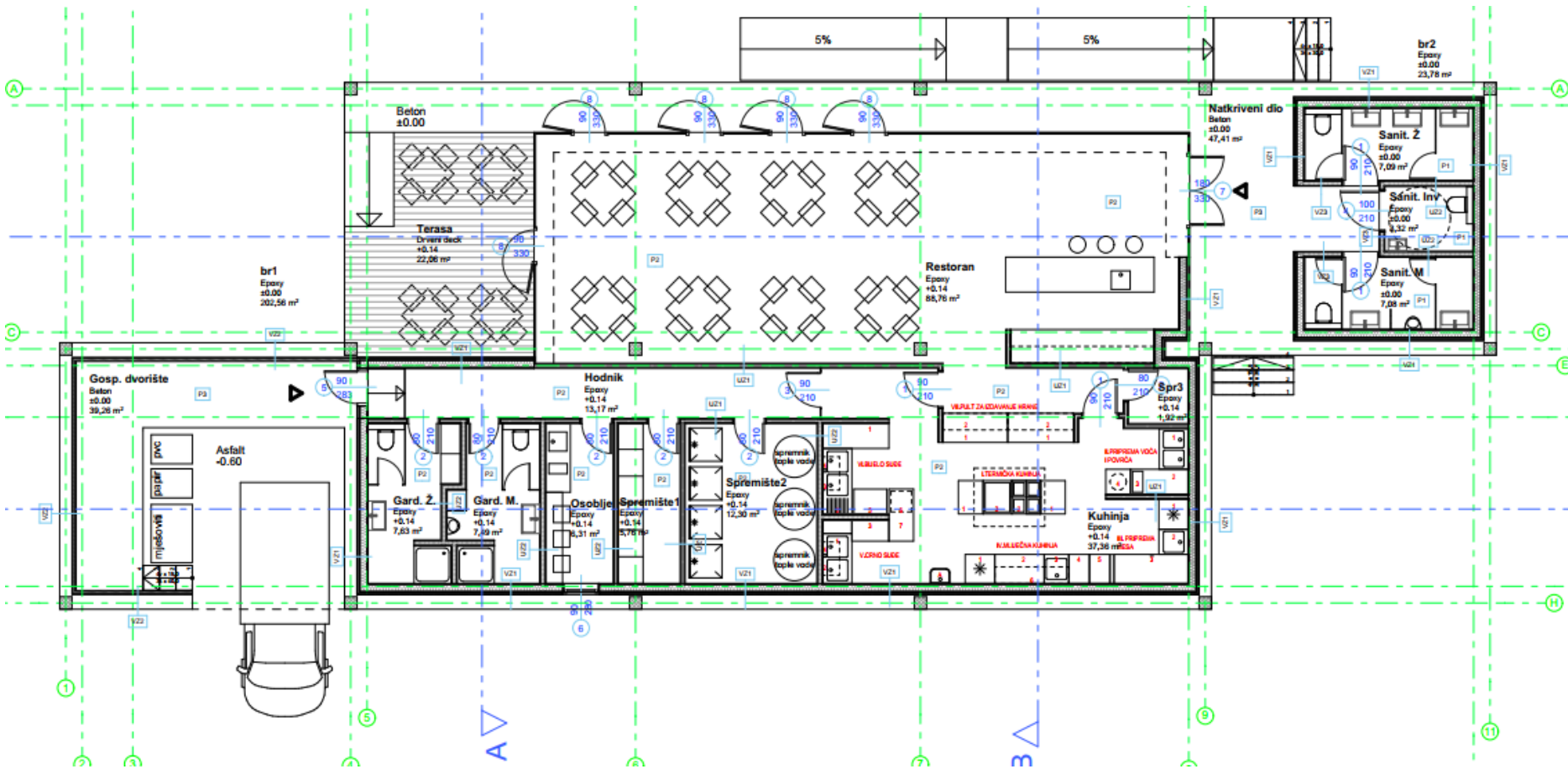
Northern & southern parcels (connected)



Buildings in CAMP Cestica



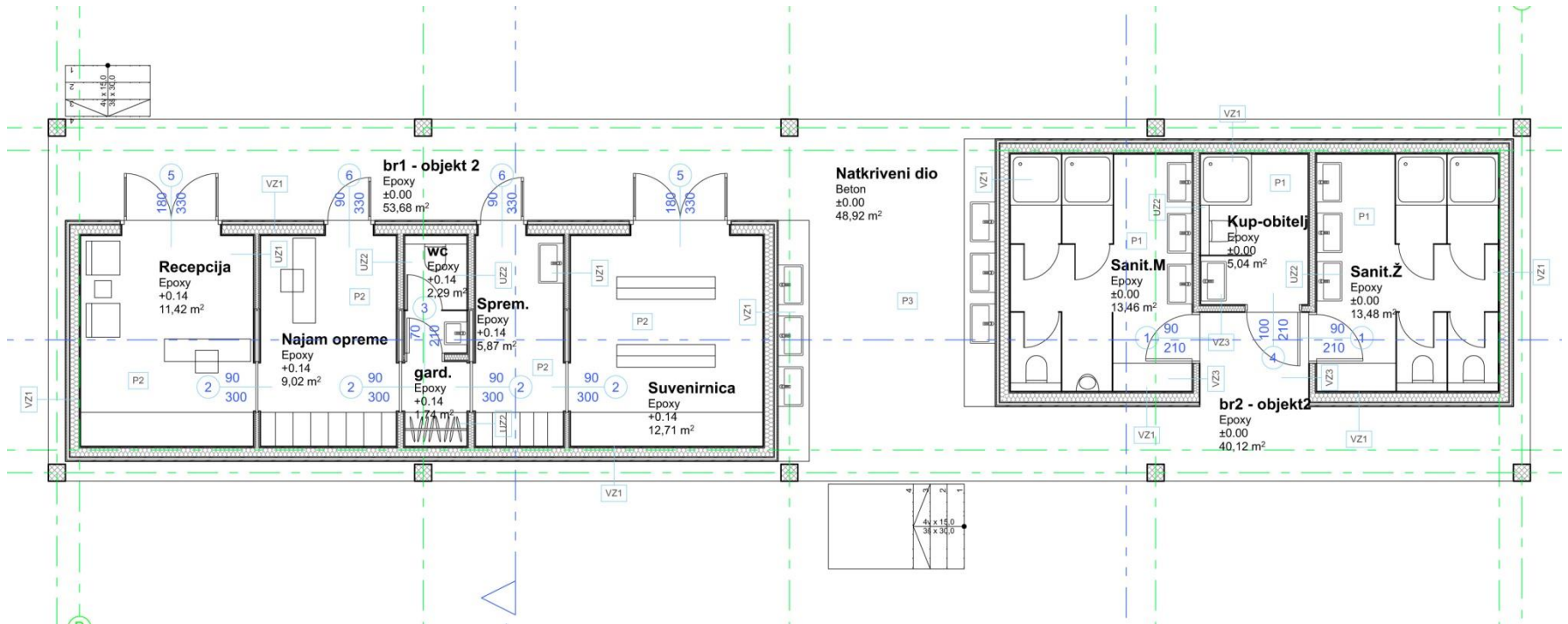
RESTAURANT



FACILITIES:

Sanitary facilities (toilets for men, toilets for women and toilets for disabled persons), restaurant with all necessary facilities, entrance hall, indoor dining and outdoor dining, kitchen, hallway, storage room, dressing room and toilets (for men and women), rest area for staff, and the storage yard

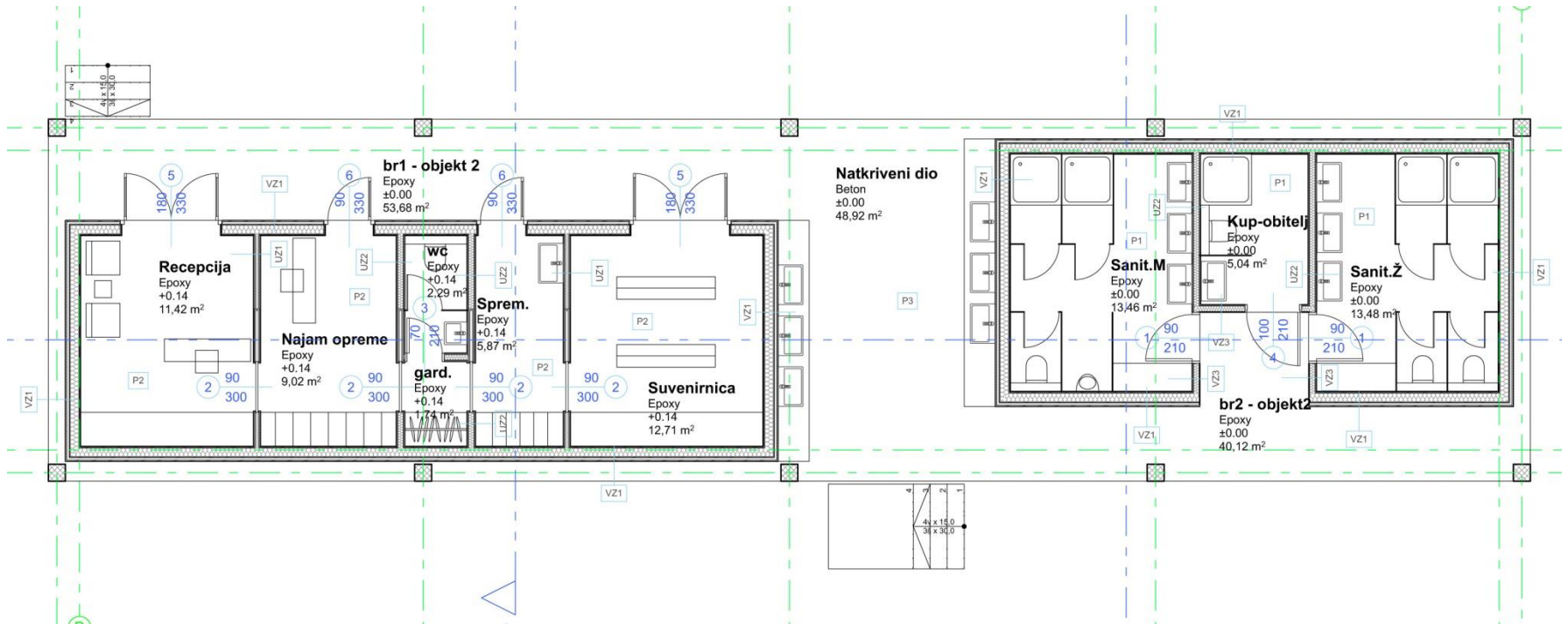
RECEPTION



FACILITIES:

Restaurant, reception area, shop with storage, spaces with equipment for rent, dressing room, sanitary facilities for staff and bathroom facilities for guests,

STORAGE

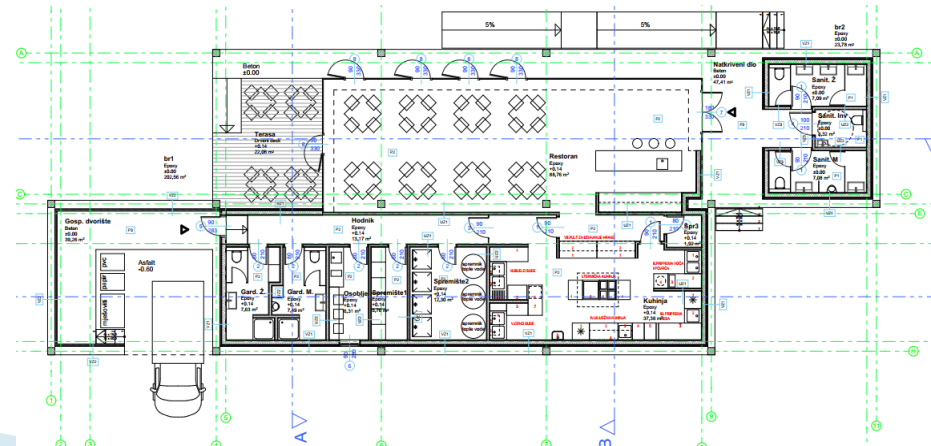


FACILITIES:

Storage areas for cleaning and maintenance equipment, laundry, chemical watercloset/storage area, and a bathing room for pets.

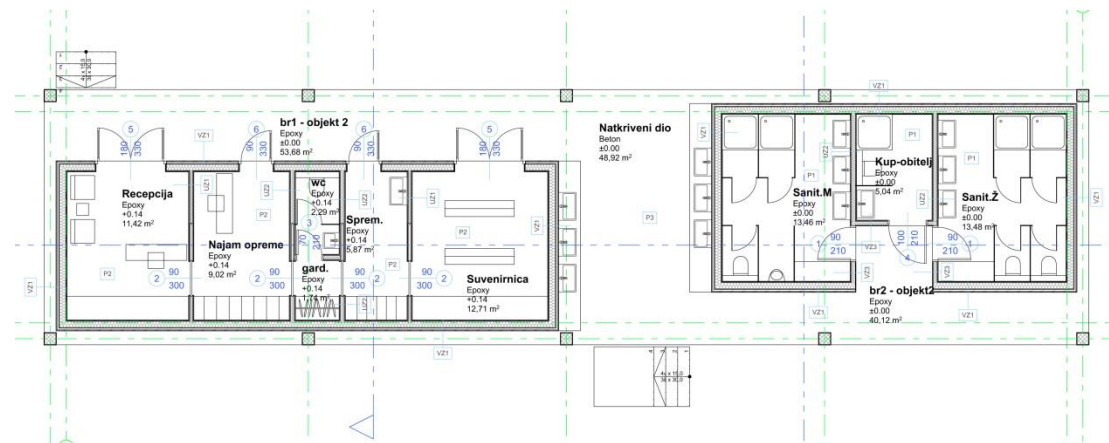
Restaurant – surface area per facility

P (m ²) - Ground floor		x	k	=	P netto
Sanitary facilities for men	7,08	x	1	=	7,08
Sanitary facilities for women	7,09	x	1	=	7,09
Sanitary facilities for persons with disabilities	3,32	x	1	=	3,32
Storage room 1	5,76	x	1	=	5,76
Storage room 2	12,3	x	1	=	12,3
Storage room 3	1,92	x	1	=	1,92
Staff room	6,31	x	1	=	6,31
Dressing room (men)	7,49	x	1	=	7,49
Dressing room (women)	7,63	x	1	=	7,63
Hallway	13,17	x	1	=	13,17
Kitchen	37,36	x	1	=	37,36
Restaurant	88,76	x	1	=	88,76
Terrace	22,06	x	0,5	=	11,03
Covered parts	47,42	x	0,5	=	23,71
Storage yard	39,26	x	0,5	=	19,63
TOTAL for BUILDING 1 (m²):					252,56 m²



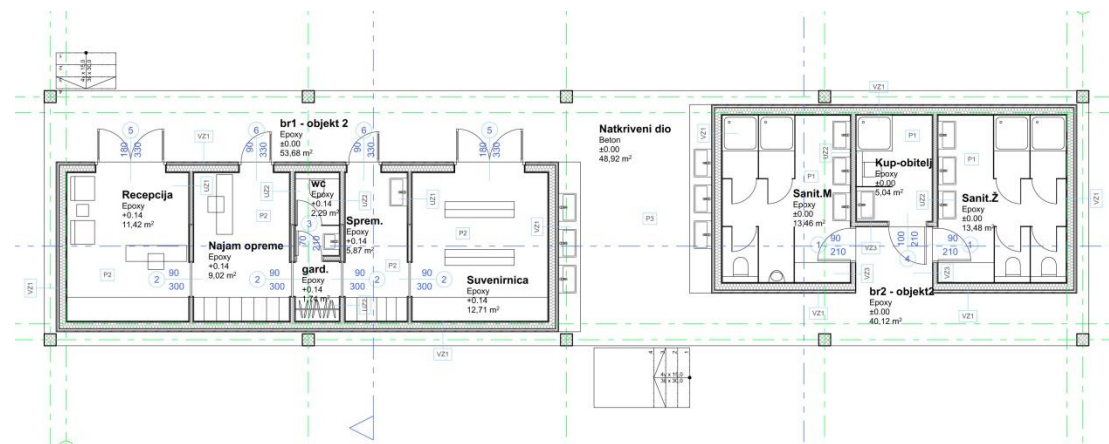
Reception – surface area per facility

BUILDING 2 (m ²) - Ground floor		x	k	=	Net surface areas, m ²
sanitary facilities -Men	13,46	x	1	=	13,46
sanitary facilities -women	13,48	x	1	=	13,48
Family bathing area	5,04	x	1	=	5,04
Reception	11,42	x	1	=	11,42
Rental equipment	9,02	x	1	=	9,02
Storage	5,87	x	1	=	5,87
WC/bathroom	2,29	x	1	=	2,29
Dressing room	1,74	x	1	=	1,74
Gift shop	12,71	x	1	=	12,71
Covered parts	48,92	x	0,5	=	24,46
TOTAL (m²) – BUILDING 2:					99,49 m



Warehouse – surface area per facility

Building 3 (m ²) - ground floor		x	k	=	Net surface areas, m ²
sanitary facilities -Men	13,46	x	1	=	13,46
sanitary facilities -women	13,48	x	1	=	13,48
bathroom for disabled persons	5,05	x	1	=	5,05
laundry 1	2,74	x	1	=	2,74
Laundry 2	5,24	x	1	=	5,24
chemical watercloset/storage	7,14	x	1	=	7,14
bathing room for pets	6,92	x	1	=	6,92
storage of equipment and maintenance equipment	19,64	x	1	=	19,64
Covered parts	54,68	x	0,5	=	27,34
TOTAL (m²) – BUILDING 3:					101,01 m²

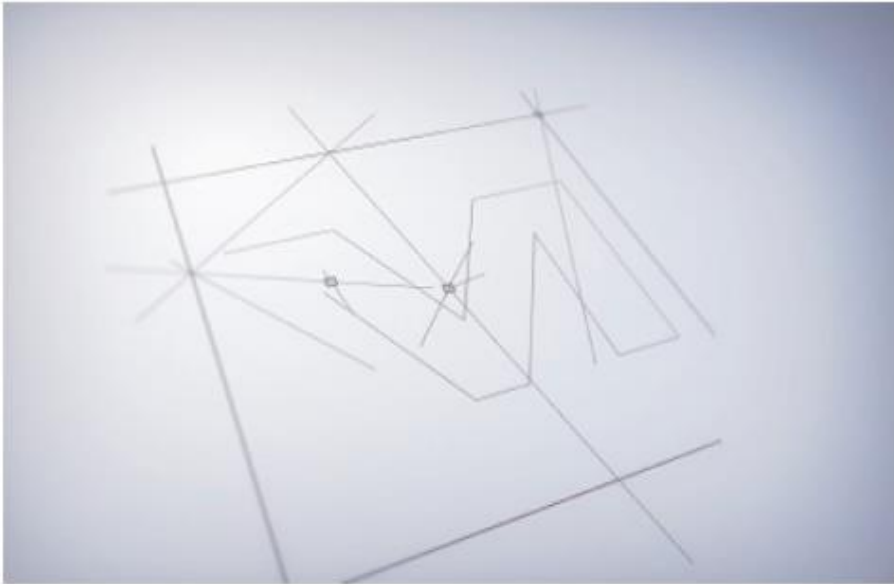


Surface area

Position	Surface area
Northern parcel	13,288 m ²
Southern parcel	7,600 m ²
TOTAL	20.888 m²

Buildings	Net surface area
Restaurant	252.56 m ²
Reception	99.49 m ²
Storage	101.01m ²
TOTAL	453.06 m²

CAMP CESTICA



5 min
walkthrough



20 sec
walkthrough

Quality of life in Cestica





Q&A



Općina Cestica

Mirko Korotaj

Mayor

Municipality of Cestica

Dravska 1a

42208 Cestica

T: +385 42 724 828

F. + 385 42 724 825

@: nacelnik@cestica.hr

W: www.cestica.hr