

Kolasin Montenegro

Town centre riverfront location

Mixed use development

90,000 square metres



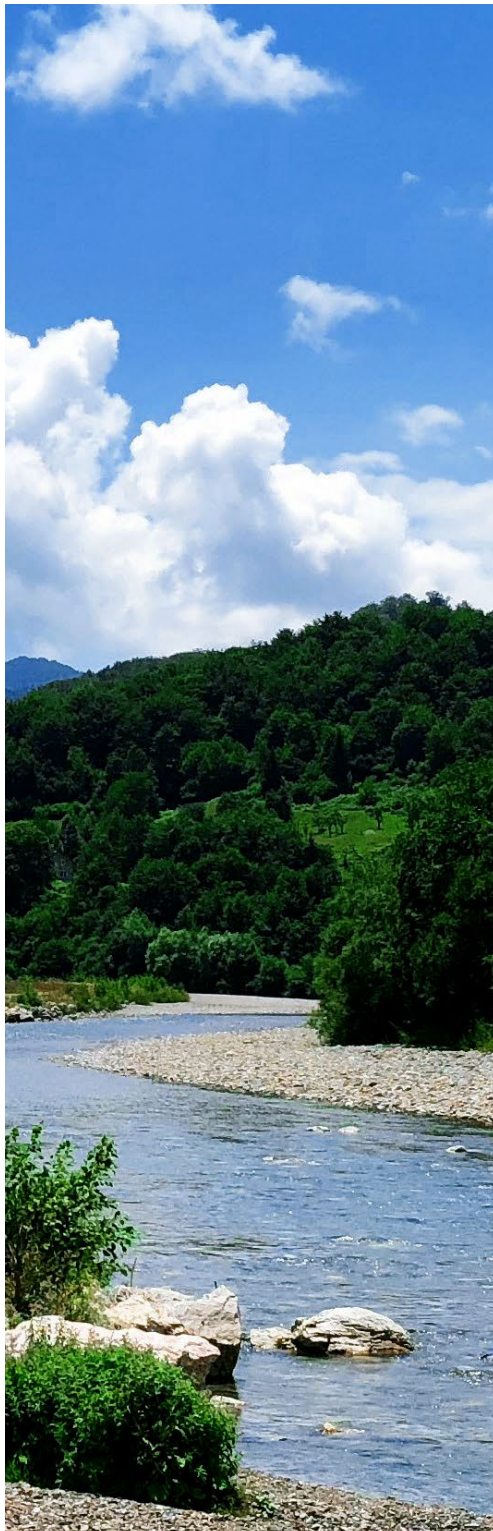


THE SITE

An expansive site located in the centre of Kolasin with an unrivalled location on the banks of the River Tara.

Surrounded by the panorama of the Bjelasica mountain range and indigenous pine forests. Flat terrain ideal for development with direct access to the town centre and a range of sports and recreational amenities already nearby.

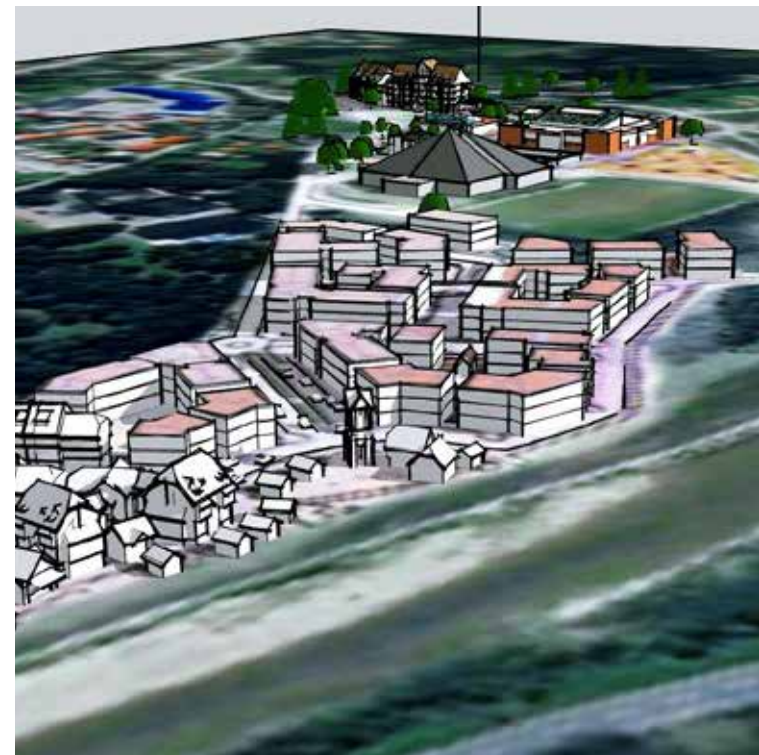






THE ZONING

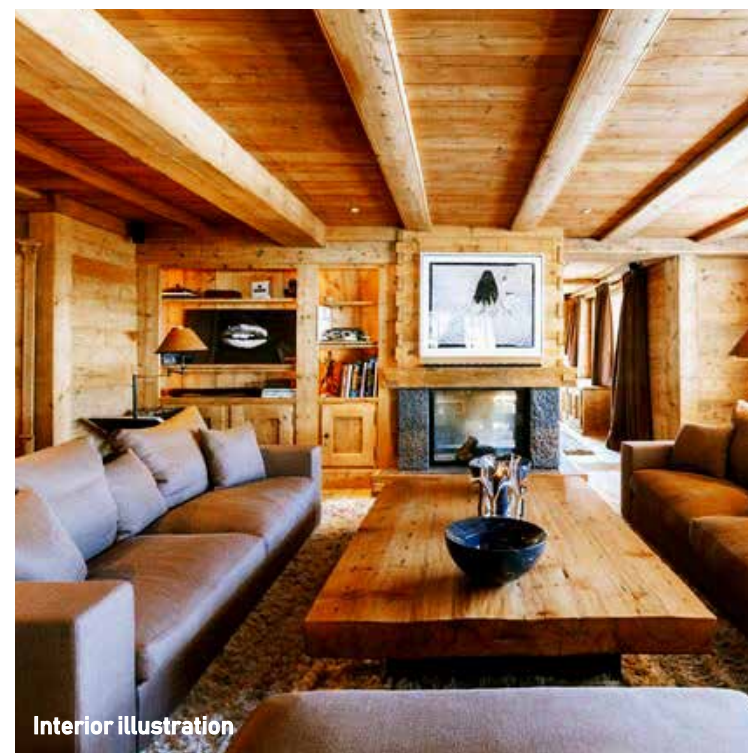
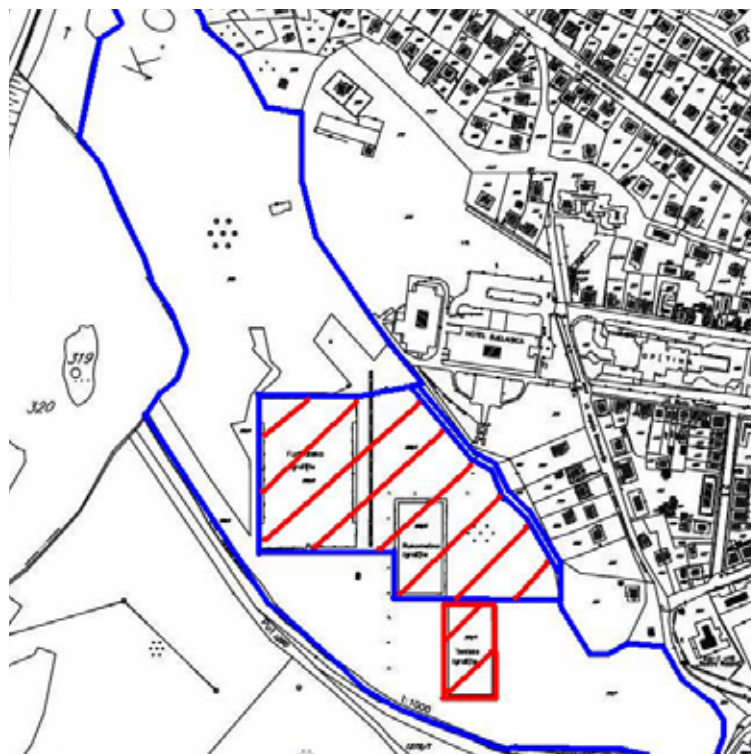
Site zoning is for tourism and recreational development with detailed planning in place allowing for a comprehensive and flexible mixture of facilities.



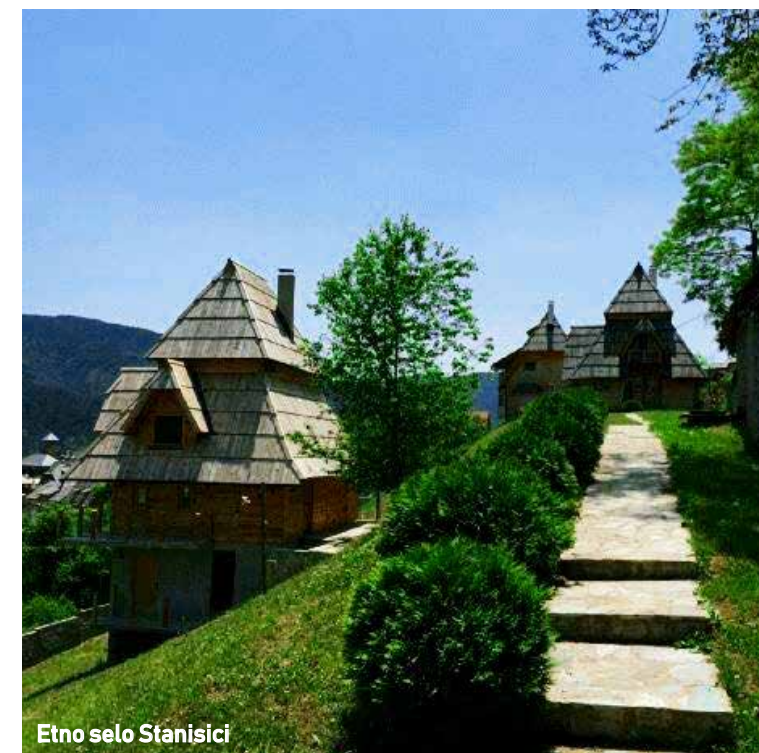
THE PROJECT

Illustrations presented show a possible project to be developed on the site.

A mixed use village located on the banks of the river backed by a range of new amenities to add to those already present in Kolasin.



Interior illustration



Etno selo Stanisici

THE STYLE

The proposed development style reflects the architectural vernacular of the region. The combination of modern styling with traditional elements creates a distinctive project with appeal to all visitors.



Drvengrad



THE TOWN

Kolasin is Montenegro's most vibrant mountain town and a popular destination for both summer and winter tourism. The existing ski area is the first to offer modern facilities in Montenegro with a further €50 million of government investment planned over the next few years. In the summer visitors come to see the two national parks at Biograd Forest and the Tara Canyon. A new highway linking Kolasin directly to Podgorica is due for completion in 2019 cutting the journey time to the capital to under 30 minutes.





THE FUTURE

Montenegro's economy has experienced fifteen years of rapid and uninterrupted growth.

The new highway and other major infrastructure investments are helping to spread this growth to the North of the country and particularly to Kolasin.

These changes are creating a demand for new services and the opportunity for a new phase of development for the town.

This site will form the focal point for that development by providing the facilities and amenities needed to build a modern, year round, mountain destination.