



INVESTMENT OPPORTUNITIES

IN THE YAROSLAVL REGION



Location

North of the Central federal district
of the Russian Federation



Population

1 272 000



Climate

temperate continental

Average temperatures

JANUARY

-11,2 °C

JULY

+16,6 °C



Area

36 200 km²



3,9 km²

Water



11,3 km²

Agricultural lands



17,2 km²

Forests



Administrative Divisions

3 Cities

17 Municipal
districts

11 Urban
settlements

69 Village
settlements

Distance to the largest cities

KOSTROMA

80 KM

IVANOV

110 KM

VOLOGDA

200 KM

MOSCOW

280 KM

KIROV

690 KM

ST.PETERSBURG

800 KM



ST.PETERSBURG



KIROV



VOLOGDA



KOSTROMA



YAROSLAVL



IVANOV



MOSCOW



The Yaroslavl Region

is one of the highly developed areas of the Russian Federation

Approx.

300

of the Yaroslavl Region companies

are federally significant

are leaders among their peers

Leading sectors:

Driving force of the economic growth:

- Engineering
- Oil refinery
- Food, beverages and tobacco production
- Building materials manufacturing

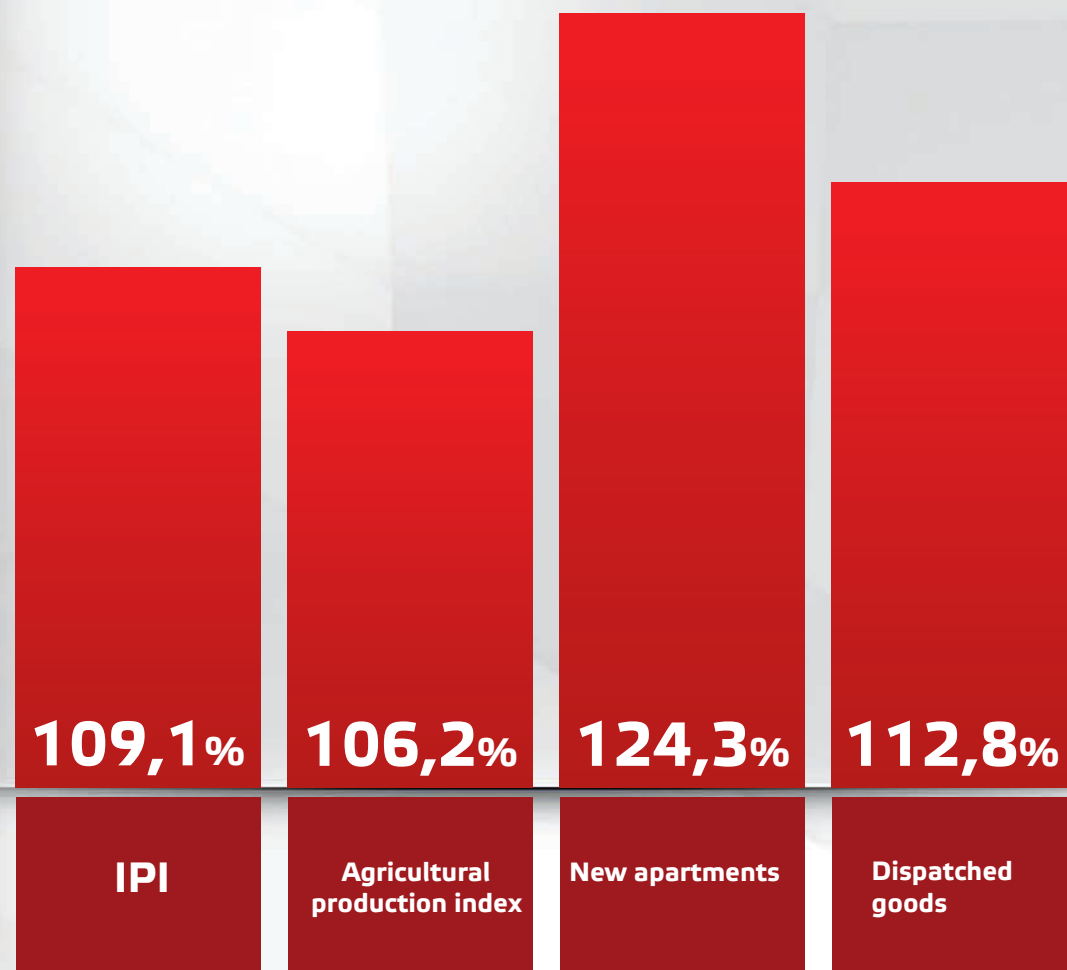
Potential for manufacturing:

- Transport vehicle and equipment
- Chemicals
- Leather products and foot-wear manufacturing
- Automobile components and parts
- Machinery and equipment manufacturing

Moderate growth area:

- Transport and communication companies
- Machinery and equipment production

QII 2015 yoy



In 2012-2013 the Yaroslavl region reported population growth



**The Yaroslavl Region
Population**

1 272 thousand
as of 01/01/2014



Urban population

81,9 % > 1041,6 thousand



Rural population

18,1 % > 230,2 thousand



**Working-age
population**

750
thousand



Males

51,3 % > 385 thousand



Females

48,7 % > 365 thousand

Mean age of the population

41,2



Males

37,7 years



Females

44,1 years

Gender Composition



Females



Males

The Yaroslavl Region
is home to over

100



colleges, universities
and research facilities



University students in 2012-2013

} 46,9 thousand



Main universities



Yaroslavl State University
named after P.G.Demidov



Yaroslavl State Technical
University



Yaroslavl State Medical
Academy



Yaroslavl Teachers'
Training University



Rybinsk State
Aviation Technical
University
named after P.A.Soloviev



Yaroslavl State Agricultural
Academy



Yaroslavl branch of Moscow
State University of Economy,
Statistics and IT (MESI)



International Academy of Business
and New Technologies (MUBiNT)

Colleges and Technical Schools

Colleges

28

Technical schools

22

Universities

Federal universities

7

State and non-state universities

37

Branches of federal universities

14

Military academy

1



The largest part of capital investment
in 2014 was made by



50,4%

Manufacturing
Companies



17,2%

Transport and
Communication
Companies

In 2014 regional companies,
including SMEs, invested

\$2.2 B

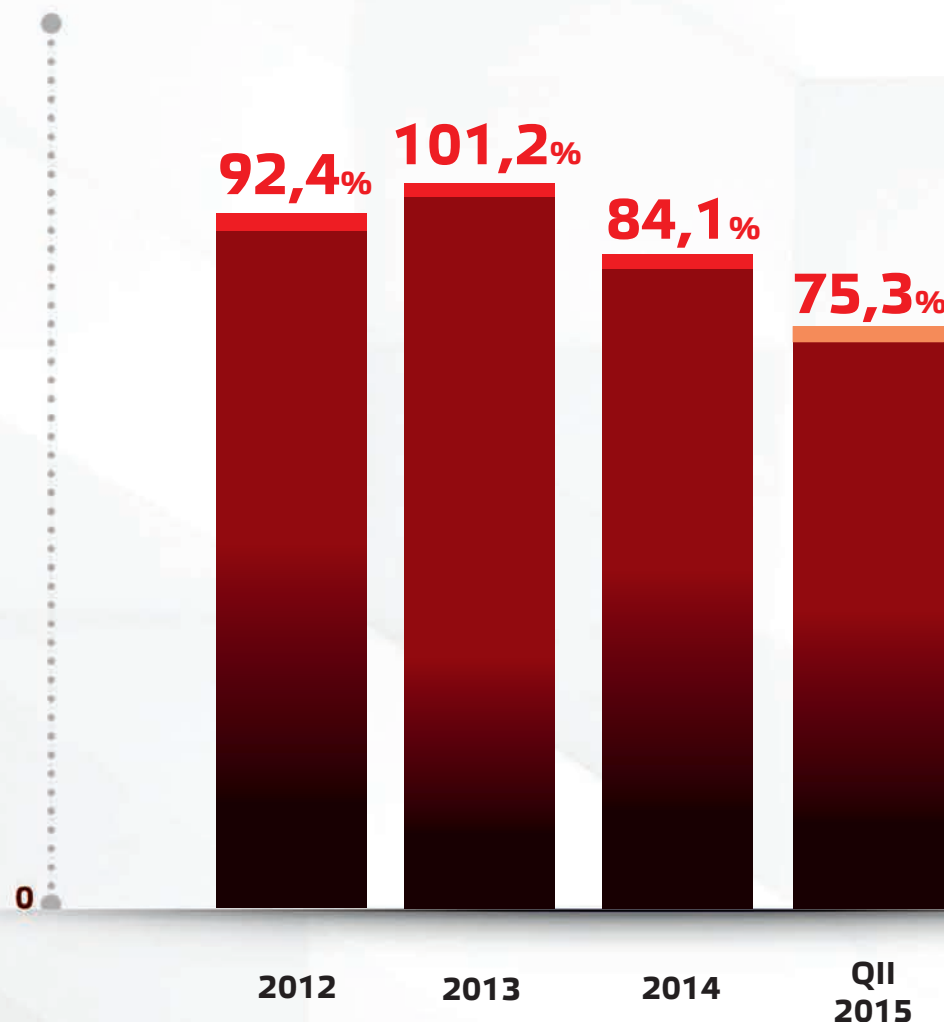
Or

94.4%

to the relevant period of 2013
(in current prices)

Capital Investment

(to the relevant period of the previous year)



Investment ratings of the Yaroslavl Region:

Foreign
investment
in 2014

\$220 M



Expert rating agency

> **3B1**

FitchRatings (rus)

> **AA-**

Foreign Investment Structure:

FDI > **19,6%** Portfolio > **15,6%** Other > **64,8%**



Pharmaceuticals



Engineering and Automobile Components and Parts



Engineering Structures



Innovative Energy





Agency for Investment and Cluster Development

- Offers various types of assistance to those who wish to invest in the Yaroslavl oblast
- Develops industrial parks in the Yaroslavl oblast
- Establishes and develops investment infrastructure



Yaroslavl Industrial Park

- Establishes and operates industrial parks in the Yaroslavl oblast
- Maintains infrastructure for industrial park residents

Industrial park
1 NOVOSELKI

400 ha

Investment site
2 YUGOZAPADNAYA

100 ha

Investment site
3 ROSTOVSKAYA

200 ha

Investment site
4 KOPAEVO

160 ha

Industrial park
5 MASTER

34 ha

Industrial park
6 GAVRILOV-YAM

15 000 m²

Investment site
7 PROTECH

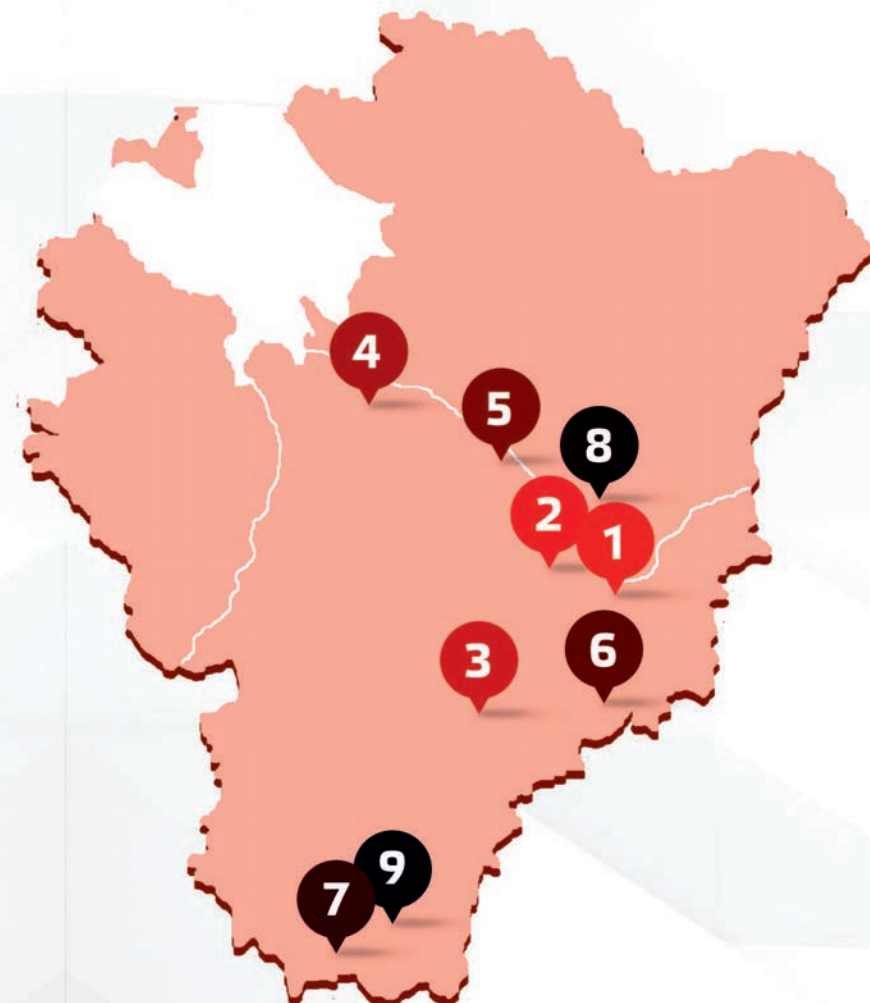
54 ha

Investment site
8 KARABIKHSKAYA

500 ha

Investment site
9 SLAVICH

220 ha



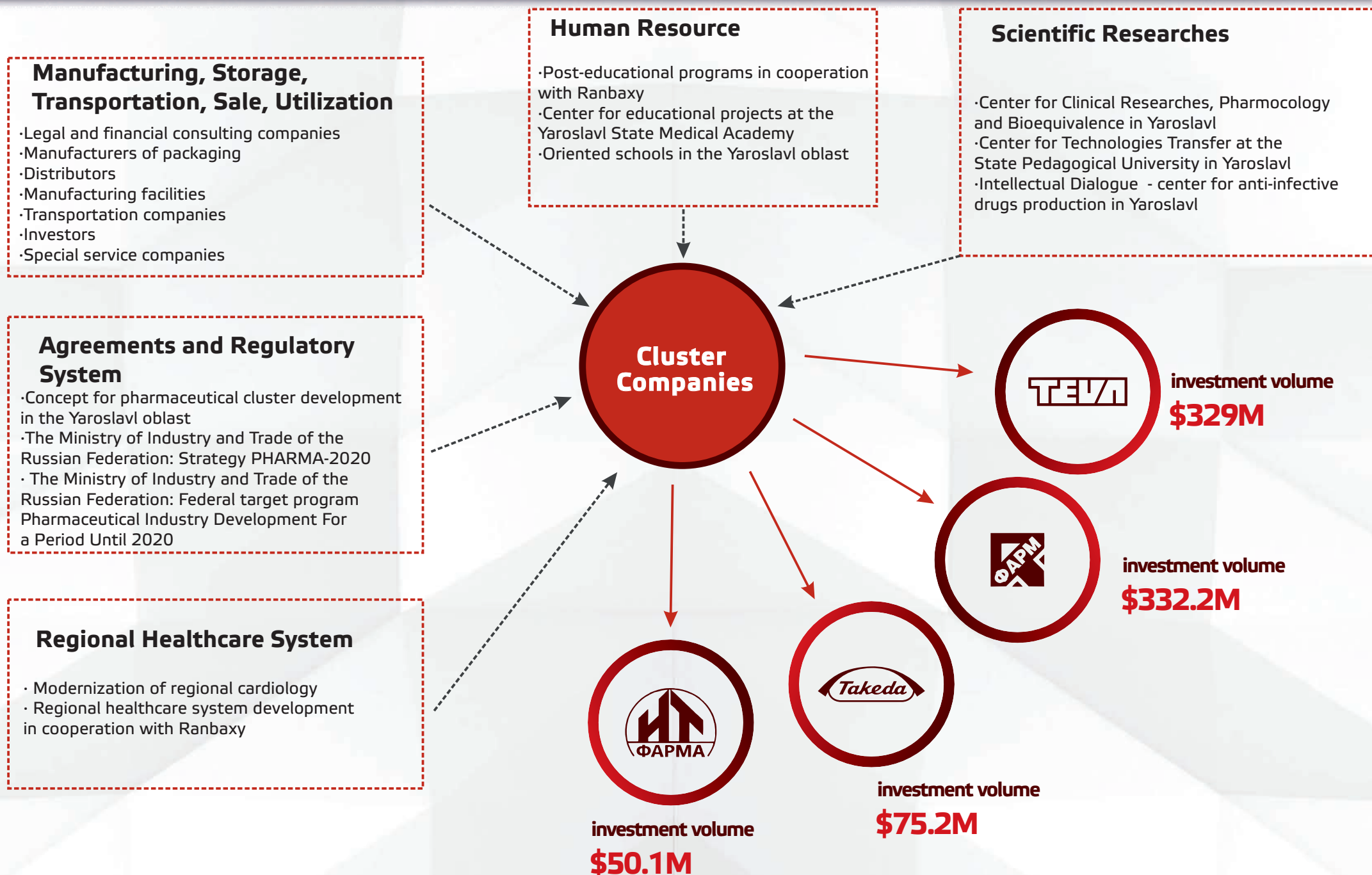
CONCEPT FOR CLUSTER DEVELOPMENT

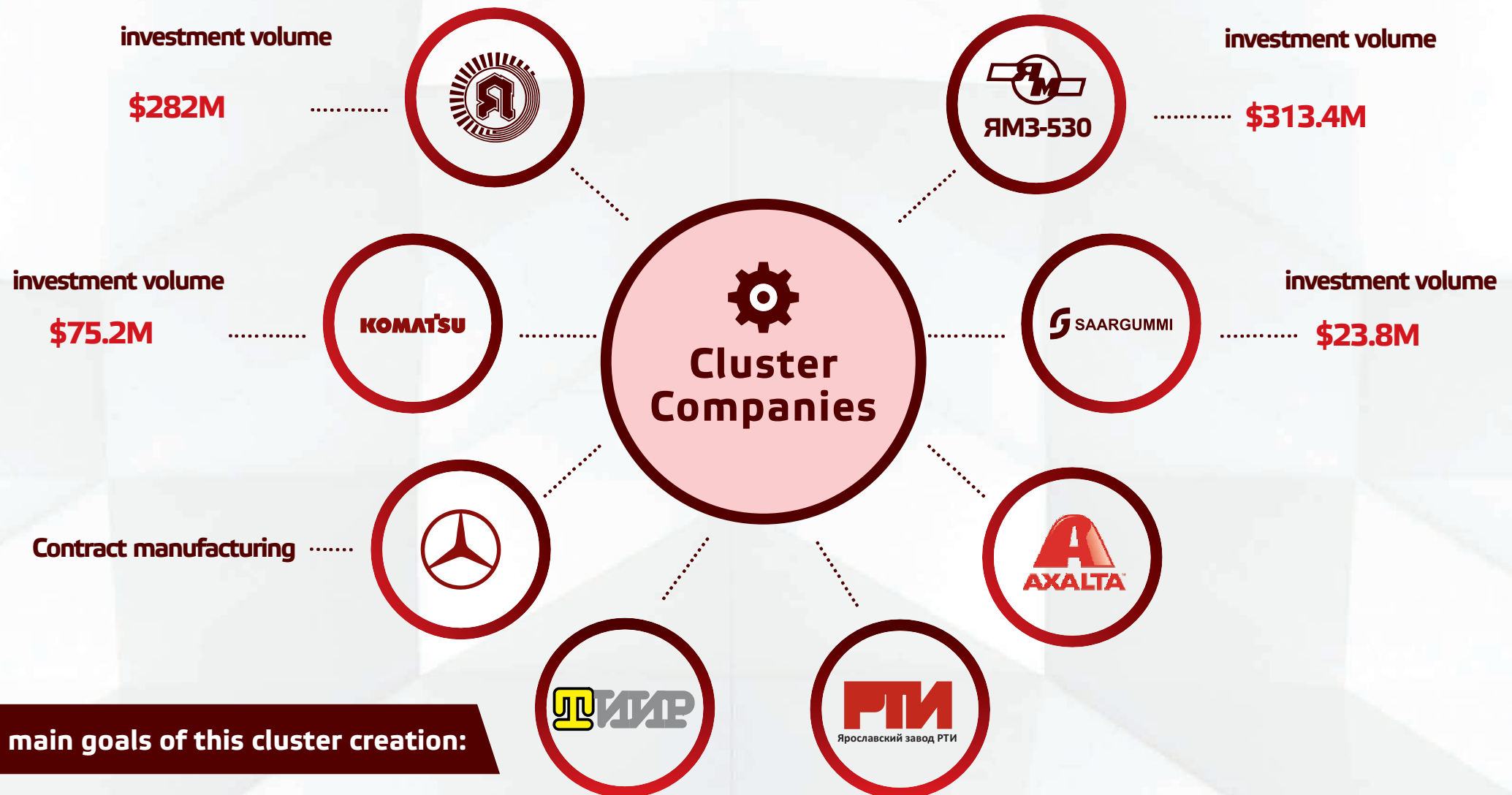
OBJECTIVE



GROWTH OF REGIONAL COMPETITIVENESS AND INCREASE OF NUMBER OF REGIONAL COMPANIES IN DOMESTIC AND INTERNATIONAL MARKETS, BOOSTING THEIR OPERATING EFFICIENCY

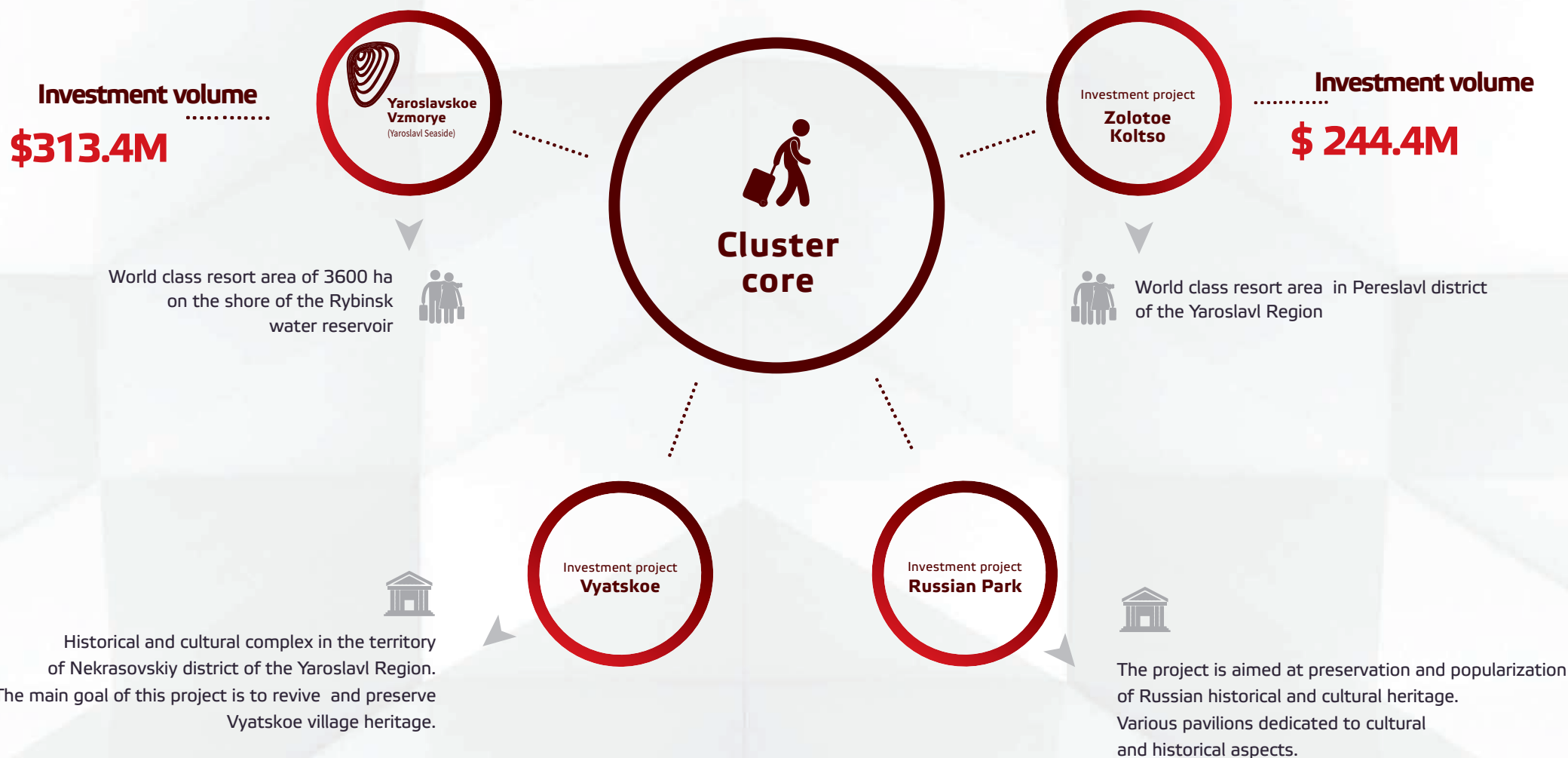
- GOALS** ●.....➔
- Maintenance of congenial conditions for the cluster companies growth, life quality improvement in cluster location area
 - Development of cluster infrastructure for innovation, production, transport, energetic, engineering, housing
 - Maintenance of congenial conditions for attracting investment to the clusters location areas
 - Conditions for attracting skilled personnel;
 - Professional and post-educational training system implementation
 - Small and medium business growth
 - Cluster companies financial support from various sources
 - Scientific, technical and industrial cooperation development





The main goals of this cluster creation:

- Setting up congenial conditions for attracting of manufacturing companies to the Yaroslavl Region
- Modernization and R&D stimulation with local companies
- Congenial conditions creation for business
- New large projects for local businesses with federal funding



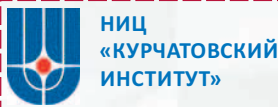
The main goals of this cluster creation:

- Setting up congenial conditions for the increase of number of tourist infrastructure objects, their service potential growth;
- New local tourist projects creation and support; participation in expos, events for the region's image and branding promotion; personnel education, analytical and methodical ware improvement;
- Management of the Yaroslavl Region tourist complex.

State institutes for development



Preproduction planning centre of excellence



Centre of excellence for non-conventional materials



Centre of excellence for aerospace thermo-physics and power engineering





Informational Support

- Consulting
- Investment project data base updating
- Information on vacant land plots offering
- Publication of priority projects information on the official site of the Yaroslavl oblast government. Presenting information on the projects at various international and national events.
- General assistance to investors



Incentives (only for investment projects in the priority list)

- Tax holidays and subsidies
- Reduced rent payments for governmental property usage
- Investment tax loans and guarantees

TAX INCENTIVES

granted to investment priority projects for a period of 7 to 9 years (payback period)



THANK YOU FOR YOUR TIME!



Agency For Investment & Cluster Development

Russia 150014, ulitsa Svobody, 71A

Telephone: +7 (4852) 77-01-91 Fax: +7 (4852) 77-01-91

E-mail: info@icdy.ru

www.icdy.ru

www.yarinvestportal.ru