

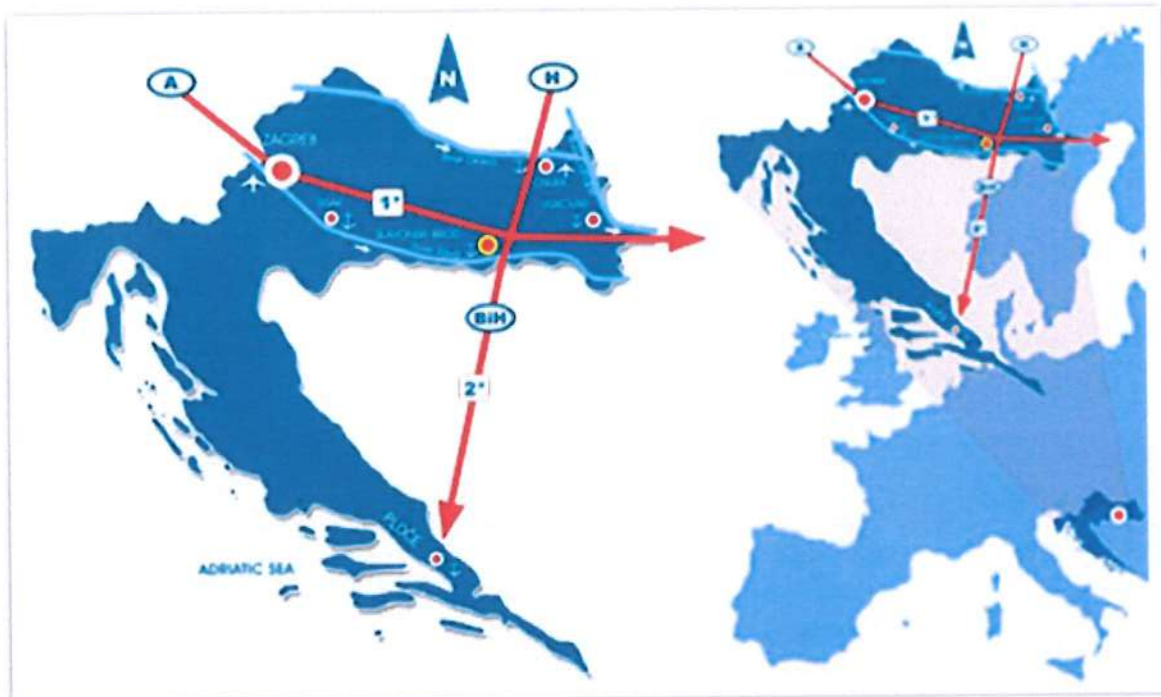
## PORT AUTHORITY SLAVONSKI BROD

With the Inland Waterway Ports Act, the Government of the Republic of Croatia founded the Port Authority in Slavonski Brod as a public institution in charge of management and development of ports and piers on the river Sava from 207-467 rkm. Port Slavonski Brod was declared a very important port for the Republic of Croatia.

The Government of the Republic of Croatia has with its Directive on determination of the port area of the Port Authority Slavonski Brod declared open for public transportation.

The Act on Navigation and Inland Waters Harbours determined the Port Authority Slavonski Brod as the public institution for management of ports and piers in the area of local jurisdiction of the Port Captaincy office Slavonski Brod. Within performance of its activities, it will ensure constant and non-disturbed port traffic and control over trade companies that perform various port activities.

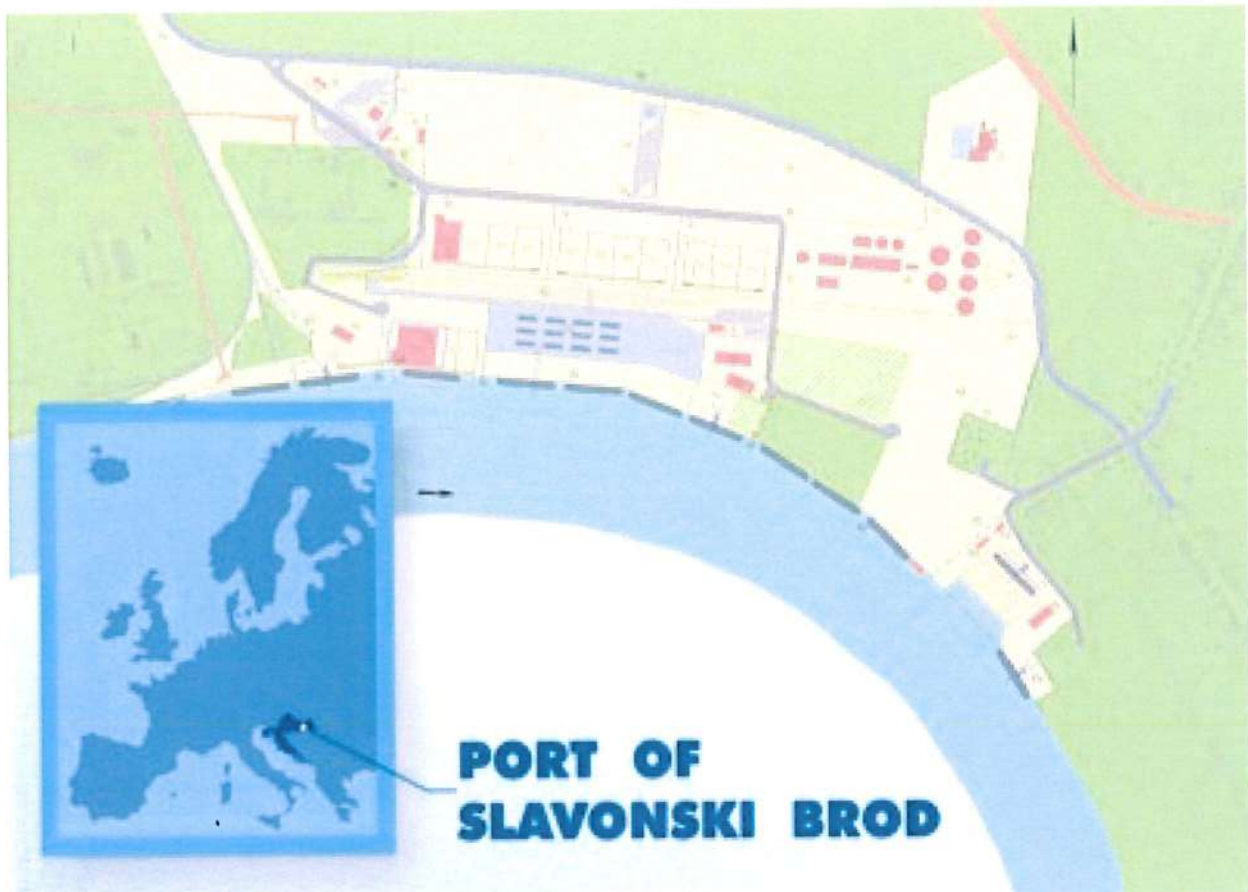




Slavonski Brod is situated at the crossroads of roads and railways that connect eastern part of Europe and the Mediterranean and represent the meeting point of all roads that connect the Central Europe with the southern part of European continent.

Very favorable position on the river of Sava and the exit to the river of Danube make water transport towards Central and South Europe possible. It is at the same time the most payable way of transporting cargo and goods. Two airports – of Osijek and Zagreb – situated quite close to the port are another advantage for the traffic of goods and services. This kind of transport is more than needed for such business forms.

Port Slavonski Brod is only inland port of core TEN-T network on river Sava and port of entry of European Union.



The Port Slavonski Brod with the determined port area is situated on the left coast of the river Sava, on the 363. river kilometer. That is approximately 4 kilometers southeast from the town Slavonski Brod.

The Port Slavonski Brod is first port for entering to EU on river Sava, situated on the border with Bosnia-Herzegovina, on the X traffic corridor. It is also near the X node and Vc traffic corridor. Due to its significance on river Sava port is in core TEN-T network. That is the reason why this port is also developing as intermodal node.

According to the special plan documentation, the port area belongs to the industrial-production zone. The port area of Slavonski Brod covers approximately 900.000 m<sup>2</sup>, and it is foreseen for construction of industrial facilities, warehouses, port terminals. Port Authority gives priority to projects that are related to environmental and renewable energy production and energy center.

Port Slavonski Brod Development Plan is based on the construction of the port with port facilities necessary for cargo transshipment, and at the same time on the development of port area with industrial and energy facilities, which will transport its raw materials and products mostly by river and train.

Port authority consists of two parts: Commercial and operational zone. Provided area for operational zone is approximately 263.000 m<sup>2</sup>. Port Authority Slavonski Brod built in the port area of Slavonski Brod vertical dock for docking boats and transshipment of general cargo and containers, length of approximately 370 m with manipulative plateau area 22.000 m<sup>2</sup>. The construction of vertical dock enabled connection to the road and rail to the river, and enabled the minimum requirements for the transshipment of cargo and special cargo up to 300 tons.

Port Authority is finished construction of vertical dock, industrial roads, railways, water supply, sewerage, DTK, gasification the construction of the container terminal and RO / LA terminal.





It is linked to international infrastructure corridors by road and railroad infrastructure, as well as to the industrial subjects of Slavonski Brod (Đuro Đaković, Slavonija Drvna Industrija, Distributivni centar snabdjevanje (DCS), Crodux Energetika etc.).

Comercial part of port authority is planed for industrial – production zone. Private investor Crodux energetika is planing to build power plant – 2 x 250 MW, fueled by gas, as well as the construction of factory for production of hydrogen, bioethanol, biodiesel or some other ecological energy source, which is decided exclusively by the private investor.

Nearby the Port area is the commercial zone, size of 300 acres, suitable for the development of all forms of industrial plants, warehouses, terminals, installation of solar panels or some other type of environmentally friendly energy production.

Development plans for Energy center

Preliminary project for potential concessionaires:

- LIQUID CARGO TERMINAL

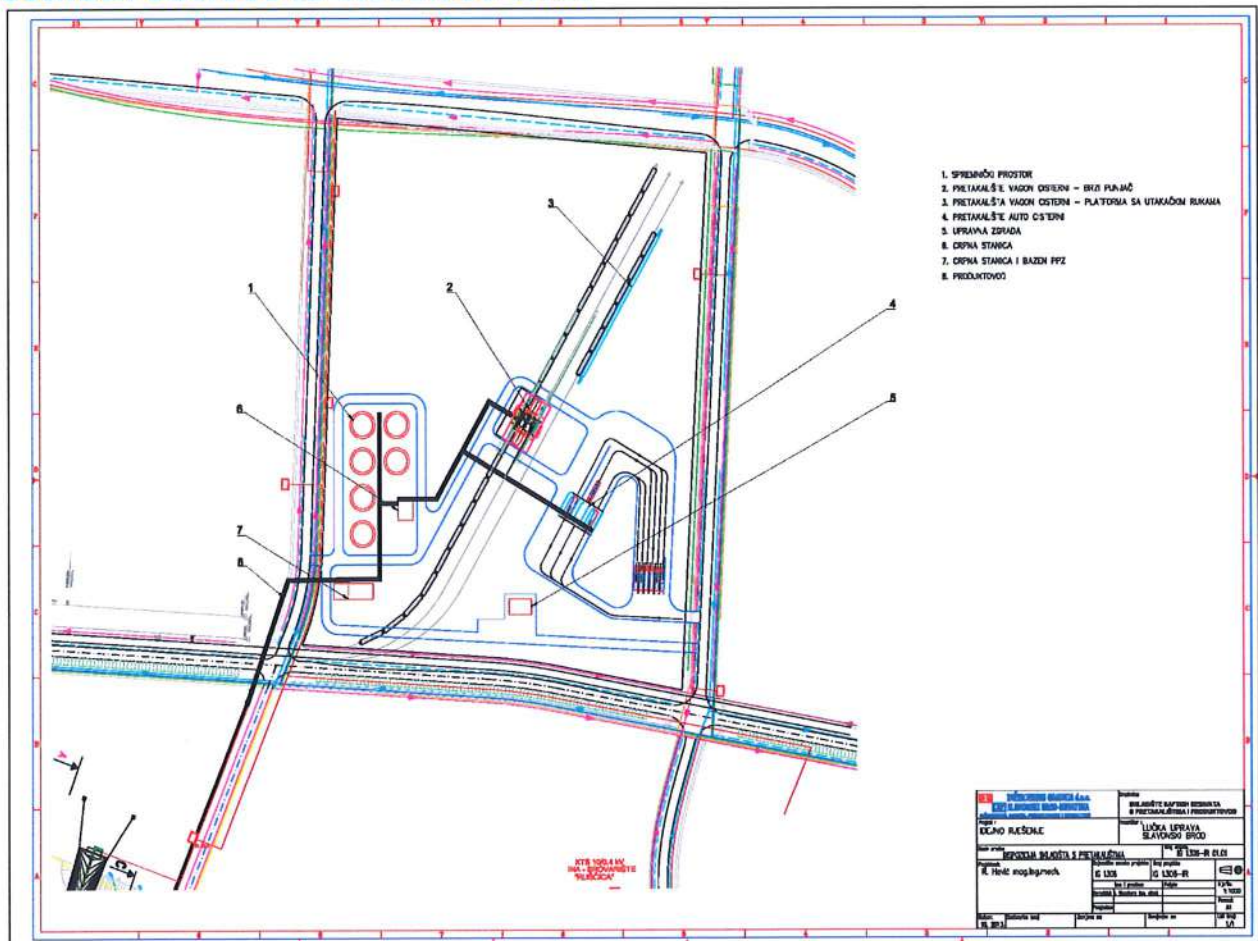
Construction of liquid cargo terminal is also planned in port area Slavonski Brod, where the Port Authority reserved the surface of 83.000m<sup>2</sup>. Total investment is estimated at the amount of 94 mil HRK or 12,5 million €.

Terminal would consist of 6 storage tanks of petroleum products capacity of 48,000 m<sup>3</sup>. In the same area construction of two loading racks is planned, one for truck cistern and one for railway cisterns.

The terminal itself would be connected by the pipeline to the Sava River.

Main purpose of the terminal is to serve for the reception, storage and shipping of oil products.

Planned transshipment of petroleum products during a year is between 500.000 to 1.000.000 tons.



### - LNG TERMINAL

Other free space is suitable for the construction of production and storage capacities related to the energy sector LNG terminal.

The terminal envisages the transfer and manipulation of liquefied gas (LNG) through pipelines, on the Sava River, trucks and by train.

Manipulation by river is carried out by barges over the pier with transfer station and transport pipelines towards the terminal. Manipulation on the railway will take place via the transfer station wagon, and by road via the truck transfer station.

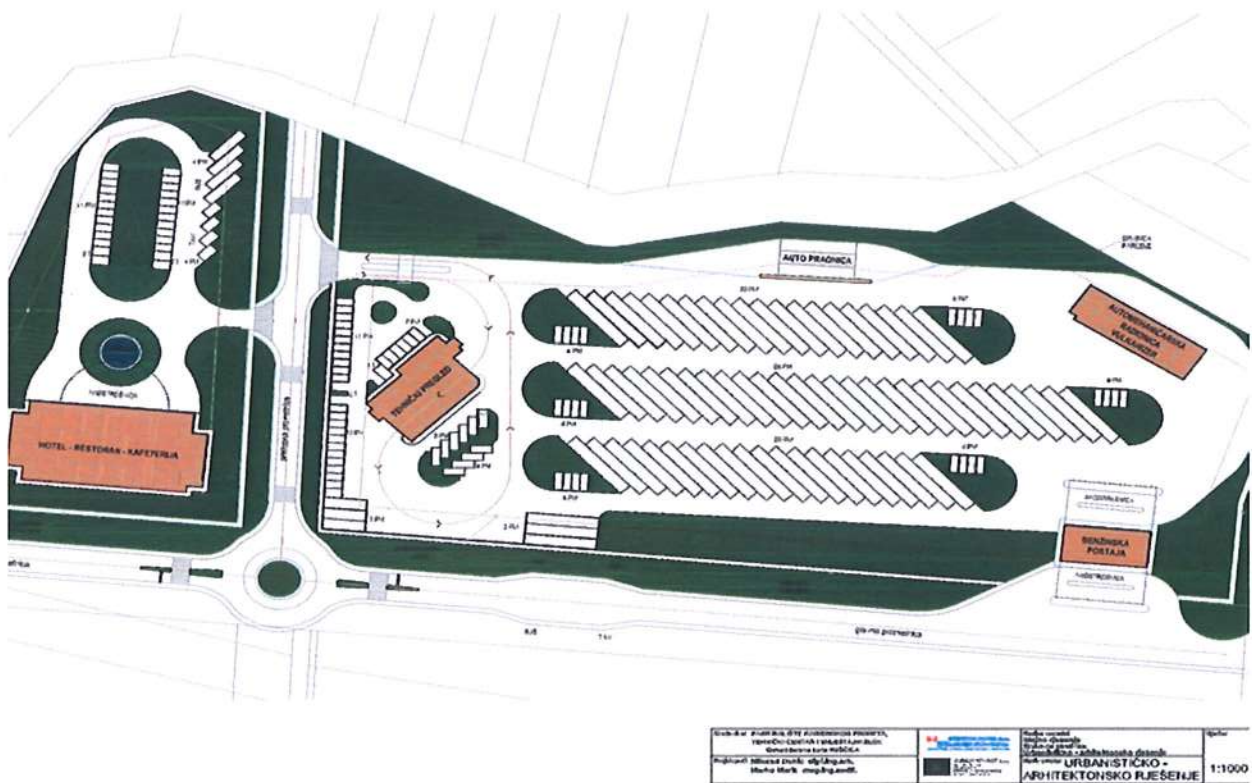
LNG terminal would be equipped with the following infrastructure: roads and parking lot, railway track, water supply and fire protection, sanitary and fecal drainage, precipitation drainage and electricity supply.  
 Planned surface for LNG terminal is 55.430 m<sup>2</sup>.

**- TRUCK PARKING, TECHNICAL CENTER AND ACCOMMODATION BLOCK**

The main goal of the complex is to provide a quality, functional and economical solution that will, given that Slavonski Brod has no large parking lots for trucks, meet the needs of a wide range of users.

The City of Slavonski Brod and the Port of Slavonski Brod, with the construction of this complex, will gain an economically significant place in the European map of integrated transport (rail, truck and river transport - the port of Slavonski Brod).

The total area available is 36,800 m<sup>2</sup>.







The conclusion:

Port of Slavonski Brod, together with its entire port area, is planned to be an energy center in the future in this part of Europe. Therefore, the above-mentioned project plans as well as the proximity of energy supply routes enable the realization of the above mentioned.

**PORT AUTHORITY SLAVONSKI BROD**

Šetalište braće Radić 19a

HR – 35 000 Slavonski Brod

Tel/fax: +385 35 404 430

e-mail: [info@lusb.hr](mailto:info@lusb.hr)